



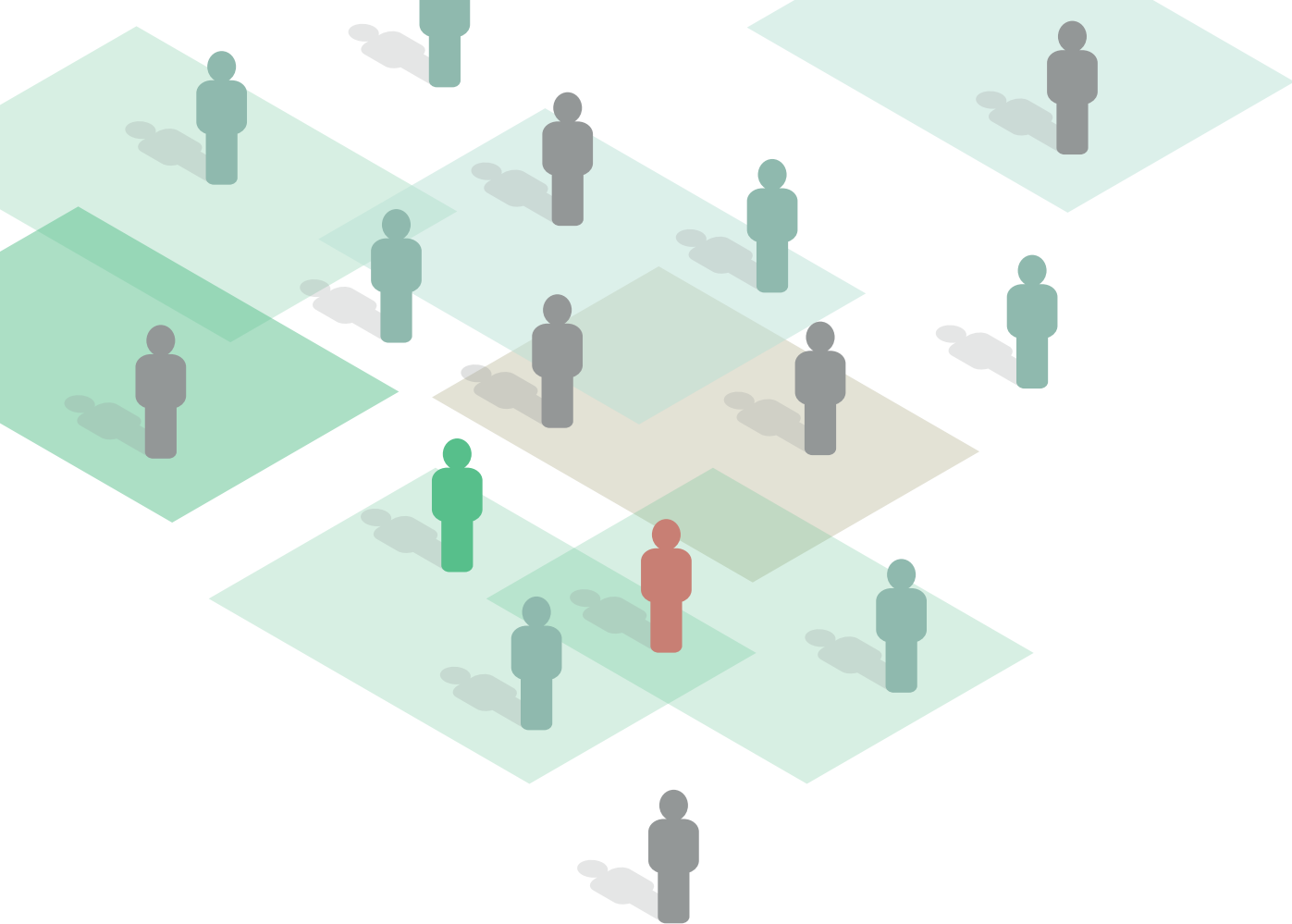
Publication List

Publications from Program for Clinical Research Infrastructure
January 2015 to March 2021

PROCRIN

PROGRAM FOR CLINICAL RESEARCH INFRASTRUCTURE

SUPPORTED BY
THE LUNDBECK FOUNDATION AND
THE NOVO NORDISK FOUNDATION

**Editorial Group**

Henrik Toft Sørensen, MD, PhD, DMSc, DSc

Professor and Chair

Department of Clinical Epidemiology, Aarhus University and Aarhus University Hospital

Helle Vester, MA

Research Coordinator

Department of Clinical Epidemiology, Aarhus University and Aarhus University Hospital

Aarhus, 2021

2nd and final edition

Design and Graphics

Ken Peter Kragfeldt

Department of Clinical Medicine, Aarhus University

Contact

procrin@clin.au.dk

Table of Contents

Preface	1
Subprogram 1: Clinical Research in General Practice	2
Subprogram 4: The Clinical Consultancy Function	6
Center for Clinical Epidemiology, Competence Center for Epidemiology and Biostatistics South, and the Research Unit for Clinical Epidemiology, Odense University Hospital	6
Department of Clinical Epidemiology, Aarhus University Hospital	7
Competence Center for Clinical Epidemiology and Biostatistics (East), Glostrup University Hospital	9
Unit of Epidemiology and Biostatistics, Aalborg University Hospital	9
Subprogram 5: The PROCRIN Scientific Coordinating Center	10
Publications from Collaborations between Department of Clinical Epidemiology and Clinical and International Departments	10
The RECORD Group	40
Papers on Methods for Analyzing Big Data	41
PhD Theses	42
Thematic Series on the Danish Clinical Registries and Databases	43

Preface

Program for Clinical Research Infrastructure (PROCRIN) was initially a two-year clinical infrastructure program which ran from 1 January 2015 to 31 December 2016 with an extension to 1 April 2017.

The overarching aim of PROCRIN was to bridge research and clinical practice. The program's ambitious vision was to support the long-term effort to ensure that all data related to a person throughout the entire healthcare system are collected systematically, undergo quality assurance, and are available for research and clinical purposes, while protecting the confidentiality of individuals.

PROCRIN consisted of five subprograms with different objectives: delivering data of high quality (Subprograms 1-3), providing epidemiological and biostatistical expertise to clinicians (Subprogram 4), and facilitating innovation and communication (Subprogram 5).

A total of 266 peer-reviewed papers have been published in the context of PROCRIN (Subprograms 1, 4, and 5) This has superseded the anticipated 250 papers from PROCRIN. All papers are reported in Researchfish.

This final PROCRIN publication list is an updated version of the interim publication list published in March 2019. The PROCRIN Management would like to take this opportunity to once again thank and acknowledge everyone who has contributed to PROCRIN. In particular, we want to extend our gratitude to the Lundbeck Foundation and the Novo Nordisk Foundation for their generous support.

Aarhus, May 2021

The PROCRIN Management

Henrik Toft Sørensen
Scientific Program Leader
Professor, MD, PhD, DMSc, DSc

Jørgen Jørgensen
Program Manager
MSc

PROCRIN

PROCRIN was funded by the Lundbeck Foundation and the Novo Nordisk Foundation and administered by Danish Regions.

This publication list is published by Department of Clinical Epidemiology, Aarhus University and Aarhus University Hospital (Subprogram 5).

Members of the PROCRIN Advisory Board: Prof. Anders Ekbohm (Chair), Prof. Clement McDonald, Prof. Liam Smeeth, and Prof. Court Pedersen.

Subprogram 1: Clinical Research in General Practice

Subprogram Leader Prof. Mogens Vestergaard

Among other things, the aim of Subprogram 1 was to document key health services provided by Danish general practitioners in the Danish National Health Service Register. The register contains information on all services provided in general practice and is a valuable source for primary healthcare research. The register can also be used to link patients and general practices in Denmark. The algorithm and documentation for a number of register variables are available online:

<http://cap.au.dk/sygesikringsregister-dokumentation-og-algoritme/>

By linking data from the Danish National Health Service Register with other nationwide registries, Subprogram 1 has conducted a large number of studies within the field of primary care epidemiology. The publications from Subprogram 1 are listed below.

Galili SF, Bech BH, Vestergaard C, Fenger-Gron M, Christensen J, Vestergaard M, Ahrensberg J.

Use of general practice before and after mild traumatic brain injury: a nationwide population-based cohort study in Denmark.

BMJ Open. 2017;7(12):e017735.

PMID: 29248884

Hjertholm P, Flarup KR, Guldbrandt LM, Vedsted P.

The completeness of chest X-ray procedure codes in the Danish National Patient Registry.

Clin Epidemiol. 2017;9:151-156. eCollection 2017.

PMID: 28293121

Jensen H, Merrild CH, Møller H, Vedsted P.

Association between GPs' suspicion of cancer and patients' usual consultation pattern in primary care: a cross-sectional study.

Br J Gen Pract. 2019;69(679):e80-e87.

PMID: 30642908

Jensen H, Vedsted P, Møller H.

Consultation frequency in general practice before cancer diagnosis in relation to the patient's usual consultation pattern: A population-based study.

Cancer Epidemiol. 2018;55:142-148.

PMID: 29960925

Jensen H, Vedsted P, Møller H.

Prognosis of cancer in persons with infrequent consultations in general practice: a population-based cohort study.

Int J Cancer. 2017;141:2400-9.

PMID: 28786109

Kjaersgaard MI, Vedsted P, Parner ET, Bech BH, Vestergaard M, Flarup KR, Fenger-Grøn M.
Algorithm linking patients and general practices in Denmark using the Danish National Health Service Register.

Clin Epidemiol. 2016;8:273-83.

PMID: 27563255

Krogsgaard LW, Vestergaard CH, Plana-Ripoll O, Lützen TH, Vestergaard M, Fenger-Grøn M, Bech BH, Rytter D.

Health care utilization in general practice after HPV vaccination - a Danish nationwide register-based cohort study.

PLoS One. 2017;12(9):e0184658.

PMID: 28886180

Lyngsøe BK, Rytter D, Munk-Olsen T, Vestergaard CH, Christensen KS, Bech BH.

Maternal depression and primary healthcare use for children: a population-based cohort study in Denmark.

Br J Gen Pract. 2019;69(680):e182-e189.

PMID: 30559112

Lyngsøe BK, Vestergaard CH, Rytter D, Vestergaard M, Munk-Olsen T, Bech BH.

Attendance of routine childcare visits in primary care for children of mothers with depression: a nationwide population-based cohort study.

Br J Gen Pract. 2018;68:e97-e104.

PMID: 29335326

Lützen TH, Bech BH, Mehlsen J, Høstrup Vestergaard C, Krogsgaard LW, Olsen J, Vestergaard M, Plana-Ripoll O, Rytter D.

Psychiatric conditions and general practitioner attendance prior to HPV vaccination and the risk of referral to a specialized hospital setting because of suspected adverse events following HPV vaccination: a register-based, matched case-control study.

Clin Epidemiol. 2017;9:465-73.

PMID: 28979164

Nørgaard H, Søndergaard Pedersen H, Fenger-Grøn M, Mors O, Nordentoft M, Vestergaard M, Munk Laursen T.

Increased use of primary care during 6 years of prodromal schizophrenia.

Acta Psychiatr Scand. 2016;134(3):225-33.

PMID: 27295520

Nørgaard HCB, Schou Pedersen H, Fenger-Grøn M, Vestergaard M, Nordentoft M, Laursen TM, Mors O.
Schizophrenia and attendance in primary healthcare: a population-based matched cohort study.

Scand J Prim Health Care. 2019;37(3):358-365.

PMID: 31299863

Orlovska S, Vestergaard CH, Bech BH, Nordentoft M, Vestergaard M, Benros ME.

Association of streptococcal throat infection with mental disorders: testing key aspects of the PANDAS hypothesis in a nationwide study.

JAMA Psychiatry. 2017 Jul 1;74(7):740-746.

PMID: 28538981

Packness A, Waldorff FB, Christensen RD, Hastrup LH, Simonsen E, Vestergaard M, Halling A.
Impact of socioeconomic position and distance on mental health care utilization: a nationwide Danish follow-up study.

Soc Psychiatry Psychiatr Epidemiol. 2017;52:1405-13.
PMID: 28849245

Prior A, Vestergaard M, Larsen KK, Fenger-Grøn M.
Association between perceived stress, multimorbidity and primary care health services: a Danish population-based cohort study.

BMJ Open. 2018;8(2):e018323.
PMID: 29478014

Rytter D, Rask CU, Vestergaard CH, Nybo Andersen AM, Bech BH.
Non-specific Health complaints and self-rated health in pre-adolescents; impact on primary health care use.

Sci Rep. 2020;10(1):3292.
PMID: 32094433

Rytter D, Vestergaard CH, Vestergaard M, Christensen J, Bech BH.
Use of primary healthcare for persons with epilepsy.

Epilepsy Behav. 2018;80:285-90.
PMID: 29415870

Schmidt SA, Vestergaard M, Pedersen HS, Schönheyder HC, Thomas SL, Smeeth L, Mansfield K, Sørensen HT, Forbes HJ, Langan SM.

Partner bereavement and risk of herpes zoster: results from two population-based case-control studies in Denmark and United Kingdom.

Clin Infect Dis. 2017;64:572-9.
PMID: 27986685

In collaboration with Subprogram 5.

Schmidt SAJ, Vestergaard M, Baggesen LM, Pedersen L, Schönheyder HC, Sørensen HT.
Prevaccination epidemiology of herpes zoster in Denmark: quantification of occurrence and risk factors.

Vaccine. 2017;35:5589-96.
PMID: 28874322

In collaboration with Subprogram 5.

Schou Pedersen H, Fenger-Grøn M, Bech BH, Erlangsen A, Vestergaard M.

Frequency of health care utilization in the year prior to completed suicide: A Danish nationwide matched comparative study.

PLoS One. 2019;14(3):e0214605. eCollection 2019.
PMID: 30917181

Würtz AM, Rytter D, Vestergaard CH, Christensen J, Vestergaard M, Bech BH.

Prenatal exposure to antiepileptic drugs and use of primary healthcare during childhood: a population-based cohort study in Denmark.

BMJ Open. 2017;7(1):e012836.
PMID: 28069620

Würtz AML, Høstrup Vestergaard C, Rytter D, Sørensen MJ, Christensen J, Vestergaard M, Bech BH.
**Prenatal exposure to antipsychotic medication and use of primary health care system in childhood:
a population-based cohort study in Denmark.**
Clin Epidemiol. 2017;9:657-666.
PMID: 29238228

Subprogram 4: The Clinical Consultancy Function

Subprogram Leader Prof. Henrik Toft Sørensen

The purpose of Subprogram 4, also called the Clinical Consultancy Function, was to assist clinicians in all five Danish regions in their endeavors to conduct clinical research based on registries and clinical databases. During PROCRIN, the Clinical Consultancy Function has offered assistance from epidemiologists and biostatisticians to 56 projects, e.g. assistance with writing a protocol, study design, applying for data and various permissions, and data analysis. The Clinical Consultancy Function was available to clinicians who did not have access to epidemiological and biostatistical assistance in their daily work.

The Clinical Consultancy Function was coordinated by Aarhus University in collaboration with the four university hospitals with clinical epidemiological functions (Aalborg, Aarhus, Odense, and Glostrup) that provided the epidemiological and biostatistical assistance.

Below is a list of publications deriving from the PROCRIN projects.

Center for Clinical Epidemiology, Competence Center for Epidemiology and Biostatistics South, and the Research Unit for Clinical Epidemiology, Odense University Hospital

Supervised by Prof. Bente Mertz Nørgård

Juul MB, Jensen PH, Engberg H, Wehberg S, Dessau-Arp A, Haziri D, Kristensen HB, Baech J, Schurmann L, Clausen MR, Valentin R, Knudsen LM, Munksgaard L, El-Galaly TC, Frederiksen H, Larsen TS.

Treatment strategies and outcomes in diffuse large B-cell lymphoma among 1011 patients aged 75 years or older: a Danish population-based cohort study.

Eur J Cancer. 2018;99:86-96.

PMID: 29935491

Nielsen SW, Ljungdalh PM, Nielsen J, Nørgård BM, Qvist N.

Maternal use of selective serotonin reuptake inhibitors during pregnancy is associated with Hirschsprung's disease in newborns - a nationwide cohort study.

Orphanet J Rare Dis. 2017;12(1):116.

PMID: 28633635

Ryg J, Engberg H, Mariadas P, Pedersen SGH, Jorgensen MG, Vinding KL, Andersen-Ranberg K.

Barthel Index at hospital admission is associated with mortality in geriatric patients: a Danish nationwide population-based cohort study.

Clin Epidemiol. 2018;10:1789-1800.

PMID: 30568512

Weltz V, Guldberg R, Larsen MD, Magnussen B, Lose G.

Influence of body mass index on short-term subjective improvement and risk of reoperation after mid-urethral sling surgery.

Int Urogynecol J. 2018;29(4):585-591.

PMID: 29435604

Department of Clinical Epidemiology, Aarhus University Hospital

Supervised by Prof. Alma Becic Pedersen

Andersen P, Erichsen R, Frøslev T, Madsen MR, Laurberg S, Iversen LH.

Open versus laparoscopic rectal cancer resection and risk of subsequent incisional hernia repair and paracolostomy hernia repair: a nationwide population-based cohort study.*Surg Endosc.* 2018;32:134-44.

PMID: 28643055

Andersen P, Jensen KK, Erichsen R, Frøslev T, Krarup PM, Madsen MR, Laurberg S, Iversen LH.

Nationwide population-based cohort study to assess risk of surgery for adhesive small bowel obstruction following open or laparoscopic rectal cancer resection.*BJS Open.* 2017;1:30-8.

PMID: 29951603

Bartels LE, Pedersen AB, Kristensen NR, Jepsen P, Vilstrup H, Steengaard-Pedersen K, Dahlerup JF.

Helicobacter pylori infection is not associated with rheumatoid arthritis.*Scand J Rheumatol.* 2018;1-8.

PMID: 30014755

Bartels LE, Pedersen AB, Kristensen NR, Vilstrup H, Stengaard-Pedersen K, Dahlerup JF.

A positive Helicobacter pylori test is associated with low spondylarthritis incidence in a Danish historical cohort study.*Rheumatol Int.* 2020;40(3):359-366.

PMID: 31802207

Birkebaek NH, Kahlert J, Bjarnason R, Drivvoll AK, Johansen A, Konradsdottir E, Pundziute-Lyckå A, Samuelsson U, Skriverhaug T, Svensson J; Nordic Childhood Diabetes Registry Study Group, NordicDiabKids.

Body mass index standard deviation score and obesity in children with type 1 diabetes in the Nordic countries. HbA1c and other predictors of increasing BMISDS.*Pediatr Diabetes.* 2018;19(7):1198-1205.

PMID: 29781227

Chalmer TA, Baggesen LM, Nørgaard M, Koch-Henriksen N, Magyari M, Sorensen PS; Danish Multiple Sclerosis Group.

Early versus later treatment start in multiple sclerosis: a register-based cohort study.*Eur J Neurol.* 2018;25(10):1262-e110.

PMID: 29847005

Clausen MR, Maurer MJ, Ulrichsen SP, Larsen TS, Himmelstrup B, Rønnov-Jessen D, Link BK, Feldman AL, Slager SL, Nowakowski GS, Thompson CA, Pedersen PT, Madsen J, Pedersen RS, Gørløv JS, Cerhan JR, Nørgaard M, D'Amore F.

Pretreatment Hemoglobin Adds Prognostic Information To The NCCN-IPI In Patients With Diffuse Large B-Cell Lymphoma Treated With Anthracycline-Containing Chemotherapy.*Clin Epidemiol.* 2019;11:987-996. eCollection 2019.

PMID: 31814771

Hyltdgaard C, Bendstrup E, Pedersen AB, Ulrichsen SP, Løkke A, Hilberg O, Ellingsen T.
Increased mortality among patients with rheumatoid arthritis and COPD: a population-based study.
Respir Med. 2018 Jul;140:101-7.
 PMID: 29957269

Hyltdgaard C, Hilberg O, Pedersen AB, Ulrichsen SP, Løkke A, Bendstrup E, Ellingsen T.
A population-based cohort study of rheumatoid arthritis-associated interstitial lung disease: comorbidity and mortality.
Ann Rheum Dis. 2017;76:1700-6.
 PMID: 28611082

Løgstrup BB, Ellingsen T, Pedersen AB, Kjaersgaard A, Bøtker HE, Maeng M.
Development of heart failure in patients with rheumatoid arthritis: a Danish population-based study.
Eur J Clin Invest. 2018;48:e12915.
 PMID: 29464714

Løgstrup BB, Ellingsen T, Pedersen AB, Kjærsgaard A, Bøtker HE, Maeng M.
Heart failure and ischemic heart disease in patients with rheumatoid arthritis.
J Am Coll Cardiol. 2017 Dec 19;70(24):3069-3071.
 PMID: 29241494

Rasmussen DB, Bodtger U, Lamberts M, Nicolaisen SK, Sessa M, Capuano A, Torp-Pedersen C, Gislason G, Lange P, Jensen MT.
Beta-blocker, aspirin and statin usage after first-time myocardial infarction in patients with chronic obstructive pulmonary disease: a nationwide analysis from 1995 to 2015 in Denmark.
Eur Heart J Qual Care Clin Outcomes. 2020;6(1):23-31.
 PMID: 30608575

Schjødt I, Johnsen SP, Strömberg A, Kristensen NR, Løgstrup BB.
Socioeconomic Factors and Clinical Outcomes Among Patients With Heart Failure in a Universal Health Care System.
JACC Heart Fail. 2019;7(9):746-755.
 PMID: 31466671

Competence Center for Clinical Epidemiology and Biostatistics (East), Glostrup University Hospital

Supervised by Consultant Charlotte Cerqueira

Husby KR, Tolstrup CK, Lose G, Klarskov N.

Manchester-Fothergill procedure versus vaginal hysterectomy with uterosacral ligament suspension: an activity-based costing analysis.

Int Urogynecol J. 2018;29(8):1161-1171.

PMID: 29480429

Ibfelt EH, Steding-Jessen M, Dalton SO, Lundstrøm SL, Osler M, Hölmich LR.

Influence of socioeconomic factors and region of residence on cancer stage of malignant melanoma: a Danish nationwide population-based study.

Clin Epidemiol. 2018;10:799-807.

PMID: 30022857

Norrbom C, Steding-Jessen M, Agger CT, Osler M, Krabbe-Sorensen M, Settnes A, Nilas L, Loekkegaard ECL.

Risk of adhesive bowel obstruction after abdominal surgery. A national cohort study of 665,423 Danish women.

Am J Surg. 2019;217(4):694-703.

PMID: 30420091

Tolstrup CK, Husby KR, Lose G, Kopp TI, Viborg PH, Kesmodel US, Klarskov N.

The Manchester-Fothergill procedure versus vaginal hysterectomy with uterosacral ligament suspension: a matched historical cohort study.

Int Urogynecol J. 2018;29:431-440.

PMID: 29288346

Unit of Epidemiology and Biostatistics, Aalborg University Hospital

Supervised by Prof. Christian Torp-Pedersen

Nielsen DV, Torp-Pedersen C, Skals RK, Gerds TA, Karaliunaite Z, Jakobsen CJ.

Intraoperative milrinone versus dobutamine in cardiac surgery patients: a retrospective cohort study on mortality.

Crit Care. 2018;22(1):51.

PMID: 29482650

Subprogram 5: The PROCRIN Scientific Coordinating Center

Subprogram Leaders Prof. Henrik Toft Sørensen and Prof. Lars Pedersen

The PROCRIN Scientific Coordinating Center coordinated the overall activities in PROCRIN. This included supporting cooperation among researchers, fostering innovation, and promoting PROCRIN and Danish clinical research nationally and internationally.

The center coordinated meetings of the subprogram leaders, advisory board, and steering committee as well as hosted courses in clinical database research to PhD students and clinicians. Furthermore, the PROCRIN Scientific Coordinating Center established an external faculty of international experts in clinical epidemiology and biostatistics, who served as advisors to PROCRIN, provided expert knowledge, and contributed to publications.

Prof. Henrik Toft Sørensen was responsible for the scientific part of Subprogram 5 and Prof. Lars Pedersen was overall responsible for statistics and data infrastructure.

The below list of publications is a result of collaborations between Department of Clinical Epidemiology at Aarhus University and Aarhus University Hospital and clinical and international departments and institutions. Furthermore, the list shows publications from the RECORD collaboration, papers on methods for analyzing big data, and a thematic series on the Danish clinical registries and databases.

Publications from Collaborations between Department of Clinical Epidemiology and Clinical and International Departments

Adelborg K^a, Corraini P, Darvalics B, Frederiksen H^b, Ording A, Horváth-Puhó E, Rørth M, Sørensen HT.
Risk of thromboembolic and bleeding outcomes following hematological cancers: A Danish population-based cohort study.

J Thromb Haemost. 2019;17(8):1305-1318.

PMID: 31054195

Collaboration with: ^a Department of Clinical Biochemistry, Aarhus University Hospital, Aarhus, Denmark;

^b Department of Hematology, Odense University Hospital, Odense, Denmark.

Adelborg K, Farkas DK, Sundbøll J, Schapira L^a, Tamang Sb, Cullen MR^b, Cronin-Fenton D, Sørensen HT.
Risk of primary gastrointestinal cancers following incident non-metastatic breast cancer: a Danish population-based cohort study.

BMJ Open Gastroenterol. 2020;7(1):e000413.

PMID: 32611556

Collaboration with: ^a Stanford Cancer Institute and Department of Medicine, Stanford University, Stanford, CA, USA; ^b Stanford Center for Population Health Sciences and Department of Medicine, Stanford University, Stanford, CA, USA.

Adelborg K, Horváth-Puhó E, Ording A, Pedersen L, Sørensen HT^a, Henderson VW^b.

Heart failure and risk of dementia: a Danish nationwide population-based cohort study.

Eur J Heart Fail. 2017;19:253-60.

PMID: 27612177

Collaboration with: ^a Department of Health Research and Policy (Epidemiology), Stanford University, Stanford, CA, USA; ^b Departments of Health Research and Policy (Epidemiology) and of Neurology and Neurological Sciences, Stanford University, Stanford, CA, USA.

Adelborg K^a, Horváth-Puhó E, Schmidt M, Munch T, Pedersen L, Nielsen PH^b, Bøtker HE^a, Sørensen HT.
Thirty-year mortality after coronary artery bypass graft surgery: a Danish nationwide population-based cohort study.

Circ Cardiovasc Qual Outcomes. 2017;10:e002708.

PMID: 28500223

Collaboration with: ^a Department of Cardiology, Aarhus University Hospital, Aarhus, Denmark; ^b Department of Cardiothoracic Surgery, Aarhus University Hospital, Aarhus, Denmark.

Adelborg K^a, Rasmussen TB, Nørrelund H, Layton JB^{b,c}, Sørensen HT, Christiansen CF.
Cardiovascular Outcomes and All-cause Mortality Following Measurement of Endogenous Testosterone Levels.

Am J Cardiol. 2019;123(11):1757-1764.

PMID: 30928032

Collaboration with: ^a Department of Clinical Biochemistry, Aarhus University Hospital, Aarhus, Denmark; ^b Department of Epidemiology, UNC Gillings School of Global Public Health, University of North Carolina, Chapel Hill, NC, USA; ^c RTI Health Solutions, Research Triangle Institute, Research Triangle Park, NC, USA.

Adelborg K^a, Schmidt M^b, Sundbøll J^a, Pedersen L, Videbech P^c, Bøtker HE^a, Egstrup K^b, Sørensen HT.
Mortality risk among heart failure patients with depression: a nationwide population-based cohort study.

J Am Heart Assoc. 2016;5. pii: e004137.

PMID: 27604456

Collaboration with: ^a Department of Cardiology, Aarhus University Hospital, Aarhus, Denmark; ^b Department of Medical Research, Odense University Hospital, Svendborg Hospital, Svendborg, Denmark; ^c Mental Health Center Glostrup, Glostrup, Denmark.

Adelborg K^a, Sundbøll J^a, Munch T, Frøslev T, Sørensen HT, Bøtker HE^a, Schmidt M^b.
Positive predictive value of cardiac examination, procedure and surgery codes in the Danish National Patient Registry: a population-based validation study.

BMJ Open 2016;6:e012817.

PMID: 27940630

Collaboration with: ^a Department of Cardiology, Aarhus University Hospital, Aarhus, Denmark; ^b Department of Internal Medicine, Randers Regional Hospital, Randers, Denmark.

Adelborg K, Sundbøll J^a, Schmidt M^b, Bøtker HE^a, Weiss NS^c, Pedersen L, Sørensen HT.
Use of histamine H₂ receptor antagonists and outcomes in patients with heart failure: a nationwide population-based cohort study.

Clin Epidemiol. 2018;10:521-30.

PMID: 29765253

Collaboration with: ^a Department of Cardiology, Aarhus University Hospital, Aarhus, Denmark; ^b Department of Cardiology, Regional Hospital West Jutland, Herning, Denmark; ^c Department of Epidemiology, University of Washington, Seattle, WA, USA.

Adelborg K, Szépligeti S, Sundbøll J, Horváth-Puhó E, Henderson VW^{a,b}, Ording A, Pedersen L, Sørensen HT^a.

Risk of stroke in patients with heart failure: a population-based 30-year cohort study.

Stroke. 2017;48:1161-8.

PMID: 28377383

Collaboration with: ^a Department of Health Research and Policy (Epidemiology), Stanford University, Stanford, CA, USA; ^b Department of Neurology and Neurological Sciences, Stanford University, Stanford, CA, USA.

Adelborg K^a, Ångquist L^{b,c}, Ording A, Gjørde LK^{b,c}, Bjerregaard LG^b, Sørensen HT, Sørensen TIA^{c,d}, Baker JL^{b,c}.

Levels of and Changes in Childhood Body Mass Index in Relation to Risk of Atrial Fibrillation and Atrial Flutter in Adulthood.

Am J Epidemiol. 2019;188(4):684-693.

PMID: 30649157

Collaboration with: ^a Department of Clinical Biochemistry, Aarhus University Hospital, Aarhus, Denmark; ^b Center for Clinical Research and Prevention, Bispebjerg and Frederiksberg Hospital, Frederiksberg, Denmark; ^c Novo Nordisk Foundation Centre for Basic Metabolic Research, University of Copenhagen, Copenhagen, Denmark; ^d Section of Epidemiology, Department of Public Health, Faculty of Health and Medical Sciences, University of Copenhagen, Copenhagen, Denmark.

Andersen ABT, Ehrenstein V, Erichsen R, Frøslev T, Sørensen HT.

Maternal inflammatory bowel disease and hypospadias in male offspring: a population-based study in Denmark.

BMJ Open Gastro 2016;3:e000121.

PMID: 27933203

Arendt JF^a, Farkas DK, Pedersen L, Nexø E^a, Sørensen HT.

Elevated plasma vitamin B12 levels and cancer prognosis: a population-based cohort study.

Cancer Epidemiol. 2016;40:158-65.

PMID: 26724465

Collaboration with: ^a Department of Clinical Biochemistry, Aarhus University Hospital, Aarhus, Denmark.

Arendt JF^a, Farkas DK, Pedersen L, Sørensen HT.

Elevated plasma vitamin B12 levels and risk of venous thromboembolism among cancer patients: a population-based cohort study.

Thromb Res. 2017;156:177-83.

PMID: 28667844

Collaboration with: ^a Department of Clinical Biochemistry, Aarhus University Hospital, Aarhus, Denmark.

Bjørge T^{a,b}, Gissler M^c, Ording AG, Engeland A^{a,d}, Glimelius I^{e,f}, Leinonen M^g, Sørensen HT, Tretli S^b, Ekbohm A^e, Troisi R^h, Grotmol T^b.

Reproductive history and risk of colorectal adenocarcinoma in parous women: a Nordic population-based case-control study.

Br J Cancer. 2016;115:1416-20.

PMID: 27701386

Collaboration with: ^a Department of Global Public Health and Primary Care, University of Bergen, Bergen, Norway; ^b Cancer Registry of Norway, Oslo, Norway; ^c National Institute for Health and Welfare (THL), Helsinki, Finland; ^d Department of Pharmacoepidemiology, Division of Mental and Physical Health, Norwegian Institute of Public Health, Bergen/Oslo, Norway; ^e Department of Medicine, Clinical

Epidemiology Unit, Karolinska Institutet and Karolinska University Hospital, Stockholm, Sweden; ^f Department of Immunology, Genetics and Pathology, Uppsala University, Uppsala, Sweden; ^g Cancer Society of Finland, Finnish Cancer Registry, Helsinki, Finland; ^h Division of Cancer Epidemiology and Genetics, National Cancer Institute, National Institutes of Health, Department of Health and Human Services, Bethesda, MD, USA.

Chen J^a, Sørensen HT, Miao M^a, Liang H^a, Ehrenstein V, Wang Z^a, Yuan W^a, Li J^a.

Cryptorchidism and increased risk of neurodevelopmental disorders.

J Psychiatr Res. 2018;96:153-61.

PMID: 29065375

Collaboration with: ^a Key Lab. of Reproduction Regulation of NPFFPC, SIPPR, IRD, Fudan University, Shanghai, China.

Christensen DH^a, Horváth-Puho E, Thomsen RW, Knudsen ST^a, Dekkers OM^b, Prandoni P^c, Sørensen HT.

Venous thromboembolism and risk of cancer in patients with diabetes mellitus.

J Diabetes Complications. 2016;30:603-7.

PMID: 26874682

Collaboration with: ^a Department of Endocrinology and Internal Medicine, Aarhus University Hospital, Aarhus, Denmark; ^b Department of Clinical Epidemiology and Metabolism, Leiden University Medical Centre, Leiden, The Netherlands; ^c Department of Cardiothoracic and Vascular Science, Thromboembolism Unit, University of Padua, Padua, Italy.

Christensen DH, Nicolaisen SK, Berencsi K, Beck-Nielsen H^a, Rungby J^{b,c}, Friborg S^d, Brandslund I^e, Christiansen JS^f, Vaag A^g, Sørensen HT^h, Nielsen JS^a, Thomsen RW.

Danish Centre for Strategic Research in Type 2 Diabetes (DD2) project cohort of newly diagnosed patients with type 2 diabetes: a cohort profile.

BMJ Open. 2018;8:e017273.

PMID: 29627803

Collaboration with: ^a Diabetes Research Centre, Department of Endocrinology, Odense University Hospital, Odense, Denmark; ^b Department of Pharmacology, Aarhus University, Aarhus, Denmark; ^c Department of Endocrinology, Bispebjerg, University Hospital Copenhagen, Copenhagen, Denmark; ^d Department of Endocrinology, Odense University Hospital, Odense, Denmark; ^e Department of Biochemistry, Lillebaelt Hospital, Vejle, Denmark; ^f Department of Internal Medicine and Endocrinology, Aarhus University Hospital, Aarhus, Denmark; ^g Cardiovascular and Metabolic Disease (CVMD) Translational Medicine Unit, Early Clinical Development, IMED Biotech Unit, AstraZeneca, Gothenburg, Sweden; ^h Department of Health Research & Policy (Epidemiology), Stanford University, Stanford, California, USA.

Christensen DH, Veres K, Ording AG, Jørgensen JOL^a, Cannegieter SC^b, Thomsen RW, Sørensen HT.

Risk of cancer in patients with thyroid disease and venous thromboembolism.

Clin Epidemiol. 2018;10:907-915.

PMID: 30123003

Collaboration with: ^a Department of Endocrinology and Internal Medicine, Aarhus University Hospital, Aarhus, Denmark; ^b Department of Clinical Epidemiology, Leiden University Medical Centre, Leiden, The Netherlands.

Christensen EF^{a,b,c}, Bendtsen MD^{a,d}, Larsen TM^{a,e}, Jensen FB^c, Lindskou TA^a, Holdgaard HO^a, Hansen PA^c, Johnsen SP, Christiansen CF.

Trends in diagnostic patterns and mortality in emergency ambulance service patients in 2007-2014: a population-based cohort study from the North Denmark Region.

BMJ Open. 2017;7:e014508.

PMID: 28827233

Collaboration with: ^a Department of Clinical Medicine, Prehospital and Emergency Research, Aalborg University, Aalborg, Denmark; ^b Department of Anaesthesiology and Intensive Care, Emergency Clinic, Aalborg University Hospital, Aalborg, Denmark; ^c Department of Prehospital Emergency Medical Services, North Denmark Region, Aalborg, Denmark; ^d Unit of Epidemiology and Biostatistics, Aalborg University Hospital, Aalborg, Denmark; ^e Unit of Business Intelligence, North Denmark Region, Aalborg, Denmark.

Chung BI^a, Hellfritsch M^b, Ulrichsen SP, Sørensen HT^c, Ehrenstein V.

Bisphosphonate use and risk of renal cell carcinoma: A population-based case-control study.

Basic Clin Pharmacol Toxicol. 2019;124(5):642-646.

PMID: 30472809

Collaboration with: ^a Stanford University School of Medicine, Stanford University, Stanford, CA, USA; ^b Clinical Pharmacology and Pharmacy, Department of Public Health, University of Southern Denmark, Odense, Denmark; ^c Department of Health Research and Policy, Stanford University, Stanford, CA, USA.

Cocoros NM^a, Ording AG, Horváth-Puhó E, Henderson VW^{b,c}, Sørensen HT^b.

In utero exposure to the 1918 pandemic influenza in Denmark and risk of dementia.

Influenza Other Respir Viruses. 2018;12:314-18.

PMID: 29356338

Collaboration with: ^a Department of Population Medicine, Harvard Medical School and Harvard Pilgrim Health Care Institute, Boston, MA, USA; ^b Department of Health Research & Policy (Epidemiology), Stanford University, Stanford, CA, USA; ^c Department of Neurology & Neurological Sciences, Stanford University, Stanford, CA, USA.

Cohen E^{a,b,c,d}, Horváth-Puhó E, Ray JG^{b,e}, Pedersen L, Adler N^f, Ording AG, Wise PH^c, Milstein A^d, Toft Sørensen H^g.

Association between the birth of an infant with major congenital anomalies and subsequent risk of mortality in their mothers.

JAMA. 2016;316:2515-24.

PMID: 27997654

Collaboration with: ^a Department of Pediatrics, The Hospital for Sick Children, University of Toronto, Toronto, Ontario, Canada; ^b Institute of Health Policy, Management, and Evaluation, University of Toronto, Toronto, Ontario, Canada; ^c Center for Primary Care and Outcomes Research, Stanford University, Stanford, CA, USA; ^d Clinical Excellence Research Center, Stanford University School of Medicine, Stanford, CA, USA; ^e St Michael's Hospital Department of Medicine, University of Toronto, Toronto, Ontario, Canada; ^f Center for Health and Community, University of California–San Francisco School of Medicine, San Francisco, CA, USA; ^g Division of Epidemiology, Department of Health Research and Policy, Stanford University, Stanford, CA, USA.

Corraini P, Heide-Jørgensen U, Schiødt M^a, Nørholt SE^b, Acquavella J, Sørensen HT, Ehrenstein V.

Osteonecrosis of the jaw and survival of patients with cancer: a nationwide cohort study in Denmark.

Cancer Med. 2017;6:2271-7.

PMID: 28941210

Collaboration with: ^a Department of Oral and Maxillofacial Surgery, Rigshospitalet, Copenhagen, Denmark;

^b Department of Oral and Maxillofacial Surgery, Aarhus University and Aarhus University Hospital, Aarhus, Denmark.

Corraini P, Henderson VW^{a,b}, Ording AG, Pedersen L, Horváth-Puhó E, Sørensen HT^a.

Long-term risk of dementia among survivors of ischemic or hemorrhagic stroke.

Stroke. 2017;48:180-6.

PMID: 27899749

Collaboration with: ^a Department of Health Research and Policy (Epidemiology), Stanford, CA, USA;

^b Department of Neurology and Neurological Sciences, Stanford University, Stanford, CA, USA.

Corraini P, Ording AG, Henderson VW^{a,b}, Szépligeti S, Horváth-Puhó E, Sørensen HT^a.

Cancer, other comorbidity, and risk of venous thromboembolism after stroke: a population-based cohort study.

Thromb Res. 2016;147:88-93.

PMID: 27710857

Collaboration with: ^a Department of Health Research & Policy (Epidemiology), Stanford University, Stanford, CA, USA;

^b Department of Neurology & Neurological Sciences, Stanford University, Stanford, CA, USA.

Corraini P, Szépligeti SK, Henderson VW^{a,b}, Ording AG, Horváth-Puhó E, Sørensen HT^a.

Comorbidity and the increased mortality after hospitalization for stroke: a population-based cohort study.

J Thromb Haemost. 2018;16:242-52.

PMID: 29171148

Collaboration with: ^a Department of Health Research and Policy (Epidemiology), Stanford University, Stanford, CA, USA;

^b Department of Neurology and Neurological Sciences, Stanford University, Stanford, CA, USA.

Cotton CC^a, Farkas DK, Foskett N^b, Sørensen HT, Milosavljevic-Ristic S^c, Balas B^e, Ehrenstein V.

Risk of Upper Gastrointestinal Bleeding and Gastroduodenal Ulcers in Persons With Schizophrenia: A Danish Cohort Study.

Clin Transl Gastroenterol. 2019;10(2):e000005.

PMID: 30829916

Collaboration with: ^a Center for Gastrointestinal Biology and Disease, University of North Carolina, Chapel Hill, NC, USA;

^b UCB Biopharma SPRL, Brussels, Belgium (affiliation during the study conduct: RocheProD Ltd., Welwyn Garden City, UK); ^c F. Hoffmann-La Roche, Basel, Switzerland.

Cronin-Fenton D, Lash TL^a, Ahern TP^b, Damkier P^{c,d}, Christiansen P^e, Ejlersen B^{f,g}, Sørensen HT^h.

Concurrent new drug prescriptions and prognosis of early breast cancer: studies using the Danish Breast Cancer Group clinical database.

Acta Oncol. 2018;57:120-8.

PMID: 29202630

Collaboration with: ^a Department of Epidemiology, Rollins School of Public Health, Emory University, Atlanta, GA, USA;

^b Departments of Surgery and Biochemistry, Larner College of Medicine, University of Vermont, Burlington, VT, USA;

^c Department of Clinical Biochemistry and Pharmacology, Odense University Hospital, Odense, Denmark;

^d Department of Clinical Research, University of Southern Denmark, Odense, Denmark;

^e Breast Unit, Aarhus University Hospital/Randers Regional Hospital, Aarhus, Denmark;

^f Danish Breast Cancer Cooperative Group, Copenhagen, Denmark;

^g Department of Oncology, Rigshospitalet, Copenhagen, Denmark;

^h Department of Health Research & Policy (Epidemiology), Stanford University, Stanford, CA, USA.

Cronin-Fenton DP, Heide-Jørgensen U, Ahern TP^a, Lash TL^b, Christiansen P^{c,d}, Ejlersen B^{d,e}, Sørensen HT.

Low-dose aspirin, nonsteroidal anti-inflammatory drugs, selective cox-2 inhibitors and breast cancer recurrence.

Epidemiology. 2016;27:586-93.

PMID: 27007644

Collaboration with: ^a Departments of Surgery and Biochemistry, University of Vermont, Burlington, VT, USA; ^b Department of Epidemiology, Rollins School of Public Health, Emory University, Atlanta, GA, USA; ^c Breast and Endocrine Section, Department of Surgery P, Aarhus University Hospital, Aarhus, Denmark; ^d Danish Breast Cancer Cooperative Group, Copenhagen, Denmark; ^e Rigshospitalet, Copenhagen, Denmark.

Cronin-Fenton DP, Heide-Jørgensen U, Ahern TP^a, Lash TL^b, Christiansen P^{c,d}, Ejlersen B^{d,e}, Sjögren^f, Kehlet H^g, Sørensen HT.

Opioids and breast cancer recurrence: a Danish population-based cohort study.

Cancer. 2015;121:3507-14.

PMID: 26207518

Collaboration with: ^a Departments of Surgery and Biochemistry, University of Vermont, Burlington, VT, USA; ^b Department of Epidemiology, Rollins School of Public Health, Emory University, Atlanta, Georgia, USA; ^c Breast and Endocrine Section, Department of Surgery P, Aarhus University Hospital, Aarhus, Denmark; ^d Danish Breast Cancer Cooperative Group, Copenhagen, Denmark; ^e Department of Oncology, Rigshospitalet, Copenhagen, Denmark; ^f Section of Palliative Medicine, Department of Oncology, Rigshospitalet, Copenhagen, Denmark; ^g Section for Surgical Pathophysiology, Rigshospitalet, Copenhagen, Denmark.

Cronin-Fenton D, Kjaersgaard A, Ahern TP^a, Mele M^b, Ewertz M^{c,d}, Hamilton-Dutoit S^e, Christiansen PM^{b,f,g}, Ejlersen B^{g,h}, Sørensen HTⁱ, Lash TL^j, Silliman RA^k.

Validity of Danish Breast Cancer Group (DBCG) registry data used in the predictors of breast cancer recurrence (ProBeCaRe) premenopausal breast cancer cohort study.

Acta Oncol. 2017;56:1155-1160.

PMID: 28585885

Collaboration with: ^a The Robert Larner, M.D. College of Medicine at The University of Vermont, Burlington, VT, USA; ^b Breast Unit, Surgical Department, Randers Regional Hospital, Randers, Denmark; ^c Department of Oncology, Odense University Hospital, Odense, Denmark; ^d Institute of Clinical Research, University of Southern Denmark, Odense, Denmark; ^e Institute of Pathology, Aarhus University Hospital, Aarhus, Denmark; ^f Department of Plastic and Breast Surgery, Aarhus University Hospital, Aarhus, Denmark; ^g Danish Breast Cancer Cooperative Group, Copenhagen, Denmark; ^h Rigshospitalet, Copenhagen, Denmark; ⁱ Department of Health Research & Policy (Epidemiology), Stanford University, Stanford, CA, USA; ^j Department of Epidemiology, Rollins School of Public Health, Emory University, Atlanta, GA, USA; ^k Boston University School of Medicine, Boston University, Boston, MA, USA.

Dekkers OM^{a,b}, Erzsébet Horváth-Puhó E, Cannejieter SC^b, Vandenbroucke J^b, Sørensen HT, Jørgensen JO^c.

Acute cardiovascular events and all-cause mortality in patients with hyperthyroidism: population-based cohort study.

Eur J Endocrinol. 2017;176(1):1-9.

PMID: 27697972

Collaboration with: ^a Department of Clinical Endocrinology and Metabolism, Leiden University Medical Centre, Leiden, The Netherlands; ^b Department of Clinical Epidemiology, Leiden University Medical Centre, Leiden, The Netherlands; ^c Department of Endocrinology and Internal Medicine, Aarhus University Hospital, Aarhus, Denmark.

Dudukina E, Farkas DK, Horváth-Puhó E, Prandoni P^a, Sørensen HT, Ehrenstein V.

Vaginal bleeding in early pregnancy and risk of occult cancer.

Int J Gynaecol Obstet. 2019;146(3):387-389.

PMID: 31127853

Collaboration with: ^a Arianna Foundation on Anticoagulation, Bologna, Italy.

Egholm G^a, Kristensen SD^a, Thim T^a, Olesen KK^a, Madsen M, Jensen SE^b, Jensen LO^c, Sørensen HT, Bøtker HE^a, Maeng M^a.

Risk associated with surgery within 12 months after coronary drug-eluting stent implantation.

J Am Coll Cardiol. 2016;68:2622-32.

PMID: 27978946

Collaboration with: ^a Department of Cardiology, Aarhus University Hospital, Aarhus, Denmark; ^b Department of Cardiology, Aalborg University Hospital, Aalborg, Denmark; ^c Department of Cardiology, Odense University Hospital, Odense, Denmark.

Ehrenstein V, Gammelager H^a, Schiødt M^b, Nørholt SE^c, Neumann-Jensen B^c, Folkmar TB^d, Pedersen L, Sværke C, Sørensen HT, Ma H^e, Acquavella J^f.

Evaluation of an ICD-10 algorithm to detect osteonecrosis of the jaw among cancer patients in the Danish National Registry of Patients.

Pharmacoepidemiol Drug Saf. 2015;24:693-700.

PMID: 25974710

Collaboration with: ^a Department of Anesthesiology and Intensive Care Medicine, Aarhus University Hospital, Aarhus, Denmark; ^b Department of Oral and Maxillofacial Surgery, Rigshospitalet, Copenhagen, Denmark; ^c Department of Oral and Maxillofacial Surgery, Aarhus University Hospital, Aarhus, Denmark; ^d Department of Oral and Maxillofacial Surgery, Aalborg University Hospital, Aalborg, Denmark; ^e Global Biostatistical Science, Amgen Inc., Thousand Oaks, CA, USA; ^f Center for Observational Research, Amgen Inc., Thousand Oaks, CA, USA.

Erichsen R, Baron JA^a, Hamilton-Dutoit SJ^b, Snover DC^c, Torlakovic EE^d, Pedersen L, Frøslev T, Vyberg M^e, Hamilton SR^f, Sørensen HT.

Increased risk of colorectal cancer development among patients with serrated polyps.

Gastroenterology. 2016;150:895-902.

PMID: 26677986

Collaboration with: ^a Department of Medicine, University of North Carolina School of Medicine, Chapel Hill, NC, USA; ^b Institute of Pathology, Aarhus University Hospital, Aarhus, Denmark; ^c Department of Pathology, Fairview Southdale Hospital, Edina, Minnesota, MN, USA; ^d Department of Pathology, University Health Network, University of Toronto, Toronto, Ontario, Canada; ^e Institute of Pathology, Aalborg University Hospital, Aalborg, Denmark; ^f Division of Pathology and Laboratory Medicine, University of Texas M.D. Anderson Cancer Center, Houston, TX, USA.

Erichsen R, Horvath-Puho E, Lund JL^a, Dellon ES^b, Shaheen NJ^{a,b}, Pedersen L, Smith GD^c, Sørensen HT.

Mortality and cardiovascular diseases risk in patients with Barrett's esophagus: a population-based nationwide cohort study.

Aliment Pharmacol Ther. 2017;45:973-82.

PMID: 28139003

Collaboration with: ^a Gillings School of Global Public Health, University of North Carolina, Chapel Hill, NC, USA; ^b Division of Gastroenterology and Hepatology, Department of Medicine, University of North Carolina School of Medicine, Chapel Hill, NC, USA; ^c MRC Integrative Epidemiology Unit (IEU), School of Social and Community Medicine, University of Bristol, Bristol, UK.

Frederiksen H^a, Farkas DK, Christiansen CF, Larsen TS^a, Hasselbalch HC^b, Stentoft J^c, Sørensen HT.
Survival of patients with chronic myeloproliferative neoplasms and a new primary cancer: a population-based study.

Lancet Haematol. 2015;2:e289-96.

PMID: 26688384

Collaboration with: ^a Department of Haematology, Odense University Hospital, Odense, Denmark;

^b Department of Haematology, Roskilde Hospital, Roskilde, Denmark; ^c Department of Haematology, Aarhus University Hospital, Aarhus, Denmark.

Frederiksen H^{a,b}, Szépligeti S, Bak M^c, Ghanima W^{d,e}, Hasselbalch HC^c, Christiansen CF.

Vascular Diseases In Patients With Chronic Myeloproliferative Neoplasms - Impact Of Comorbidity.

Clin Epidemiol. 2019;11:955-967.

PMID: 31807079

Collaboration with: ^a Department of Haematology, Odense University Hospital, Odense, Denmark;

^b Department of Clinical Research, University of Southern Denmark, Odense, Denmark; ^c Department of Haematology, Zealand University Hospital, Roskilde, Denmark; ^d Departments of Oncology, Medicine and Research, Østfold Hospital Trust, Kalnes, Norway; ^e Department of Haematology, Institute of Clinical Medicine, University of Oslo, Oslo, Norway.

Gedebjerg A, Szépligeti SK, Wackerhausen LH^a, Horváth-Puhó E, Dahl R^{b,c,d}, Hansen JG, Sørensen HT, Nørgaard M, Lange P^{e,f}, Thomsen RW.

Prediction of mortality in patients with chronic obstructive pulmonary disease with the new Global Initiative for Chronic Obstructive Lung Disease 2017 classification: a cohort study.

Lancet Respir Med. 2018;6:204-212.

PMID: 29331311

Collaboration with: ^a Department of Pulmonary Medicine, Aalborg University Hospital, Aalborg, Denmark;

^b Department of Pulmonary Medicine, Aarhus University Hospital, Aarhus, Denmark; ^c GlaxoSmithKline, Brentford, UK; ^d Department of Clinical Medicine, Aarhus University, Aarhus, Denmark; ^e Department of Social Medicine, Institute of Public Health, Copenhagen University, Copenhagen, Denmark; ^f Medical Department, Section of Respiratory Medicine, Herlev and Gentofte University Hospital, Herlev, Denmark.

Gradus JL^{a,b}, Farkas DK, Svensson E, Ehrenstein V, Lash TL^c, Milstein A^d, Adler N^e, Sørensen HT.

Associations between stress disorders and cardiovascular disease events in the Danish population.

BMJ Open. 2015;5:e009334.

PMID: 26667014

Collaboration with: ^a National Center for PTSD, VA Boston Healthcare System, Boston, MA, USA;

^b Departments of Psychiatry and Epidemiology, Boston University, Boston, MA, USA; ^c Department of Epidemiology, Rollins School of Public Health, Emory University, Atlanta, GA, USA; ^d Clinical Excellence Research Center, Stanford University, Stanford, CA, USA; ^e Department of Psychiatry, University of California, San Francisco, CA, USA.

Gribsholt SB^a, Cronin-Fenton D, Veres K, Thomsen RW, Ording AG, Richelsen B^b, Sørensen HT.

Hospital-diagnosed overweight and obesity related to cancer risk: a 40-year Danish cohort study.

J Intern Med. 2020;287(4):435-447.

PMID: 31912596

Collaborations with: ^a Department of Endocrinology and Internal Medicine, Aarhus University Hospital, Aarhus, Denmark; ^b Steno Diabetes Center Aarhus, Aarhus University Hospital, Aarhus, Denmark.

Gribsholt SB^a, Pedersen L, Richelsen B^a, Dekkers O^b, Thomsen RW.

Body Mass Index of 92,027 patients acutely admitted to general hospitals in Denmark: associated clinical characteristics and 30-day mortality.

PLoS One. 2018;13:e0195853.

PMID: 29659630

Collaboration with: ^a Department of Endocrinology and Internal Medicine, Aarhus University Hospital, Aarhus, Denmark; ^b Department of Clinical Epidemiology and Internal Medicine, Leiden University Medical Centre, Leiden, The Netherlands.

Gribsholt SB^a, Svensson E, Richelsen B^a, Raundahl U^b, Sørensen HT, Thomsen RW.

Rate of acute hospital admissions before and after Roux-en-Y gastric bypass surgery: a population-based cohort study.

Annals of Surgery. 2016;267:319-325.

PMID: 27997471

Collaboration with: ^a Department of Endocrinology and Internal Medicine, Aarhus University Hospital, Aarhus, Denmark; ^b Department of Surgery, Aarhus University Hospital, Aarhus, Denmark.

Gribsholt SB, Svensson E, Thomsen RW, Richelsen B^a, Sørensen HT.

Preoperative glucocorticoid use and risk of postoperative bleeding and infection after gastric bypass surgery for the treatment of obesity.

Surg Obes Relat Dis. 2015;11:1212-7.

PMID: 26001556

Collaboration with: ^a Department of Endocrinology and Internal Medicine, Aarhus University Hospital, Aarhus, Denmark.

Gribsholt SB, Thomsen RW, Farkas DK, Sørensen HT, Richelsen B^a, Svensson E.

Changes in prescription drug use after gastric bypass surgery: a nationwide cohort study.

Annals of Surgery. 2017;265:757-65.

PMID: 28124974

Collaboration with: ^a Department of Endocrinology and Internal Medicine, Aarhus University Hospital, Aarhus, Denmark.

Gribsholt SB, Thomsen RW, Svensson E, Richelsen B^a.

Overall and cause-specific mortality after Roux-en-Y gastric bypass surgery: a nationwide cohort study.

Surg Obes Relat Dis. 2017;13:581-7.

PMID: 27876334

Collaboration with: ^a Department of Endocrinology and Internal Medicine, Aarhus University Hospital, Aarhus, Denmark.

Hansen AT^a, Erichsen R, Horváth-Puhó E, Sørensen HT.

Inflammatory bowel disease and venous thromboembolism during pregnancy and the postpartum period.

J Thromb Haemost. 2017;15:702-8.

PMID: 28135041

Collaboration with: ^a Department of Clinical Biochemistry, Aarhus University Hospital, Aarhus, Denmark.

Hansen AT^a, Schmidt M, Horváth-Puhó E, Pedersen L, Rothman KJ^b, Hvas AM^a, Sørensen HT.

Preconception venous thromboembolism and placenta-mediated pregnancy complications.

J Thromb Haemost. 2015;13:1635-41.

PMID: 26178661

Collaboration with: ^a Department of Clinical Biochemistry, Aarhus University Hospital, Aarhus, Denmark;

^b RTI Health Solutions, Research Triangle Institute, Research Triangle Park, NC, USA.

Heide-Jørgensen U, Adelborg K, Kahlert J, Sørensen HT, Pedersen L.

Sampling strategies for selecting general population comparison cohorts.

Clin Epidemiol. 2018;10:1325-1337.

PMID: 30310326

Hellfritsch M^a, Thomsen RW, Baggesen LM, Larsen FB^b, Sørensen HT, Christiansen CF.

Lifestyle, socioeconomic characteristics, and medical history of elderly persons who receive seasonal influenza vaccination in a tax-supported healthcare system.

Vaccine. 2017;35:2396-2403.

PMID: 28343782

Collaboration with: ^a Clinical Pharmacology and Pharmacy, Department of Public Health, University of Southern Denmark, Odense, Denmark; ^b DEFACTUM, Central Denmark Region, Aarhus, Denmark.

Hjorth CF, Nielsen AS^a, Sørensen HT, Lash TL^b, Damkier P^{c,d}, Hamilton-Dutoit S^a, Cronin-Fenton D.

Multi-drug resistance protein 2 (MRP2) expression, adjuvant tamoxifen therapy, and risk of breast cancer recurrence: a Danish population-based nested case-control study.

Acta Oncol. 2019;58(2):168-174.

PMID: 30458661

Collaboration with: ^a Department of Pathology, Aarhus University Hospital, Aarhus, Denmark; ^b Department of Epidemiology, Rollins School of Public Health, and Winship Cancer Institute, Emory University, Atlanta, GA, USA; ^c Institute of Clinical Research, University of Southern Denmark, Odense, Denmark;

^d Department of Clinical Biochemistry and Pharmacology, Odense University Hospital, Odense, Denmark.

Holland-Bill L^a, Christiansen CF, Farkas DK, Donskov F^b, Jørgensen JOL^c, Sørensen HT.

Diagnosis of hyponatremia and increased risk of a subsequent cancer diagnosis: results from a nationwide population-based cohort study.

Acta Oncol. 2018;57:522-7.

PMID: 28920509

Collaboration with: ^a Department of Anesthesiology, Aarhus University Hospital, Aarhus, Denmark;

^b Department of Oncology, Aarhus University Hospital, Aarhus, Denmark; ^c Department of Endocrinology and Internal Medicine, Aarhus University Hospital, Aarhus, Denmark.

Holland-Bill L, Christiansen CF, Heide-Jørgensen U, Ulrichsen SP, Ring T^a, Jørgensen JOL^b, Sørensen HT.

Hyponatremia and mortality risk: a Danish cohort study of 279,508 acutely admitted patients.

Eur J Endocrinol. 2015;173:71-81.

PMID: 26036812

Collaboration with: ^a Department of Nephrology, Aalborg University Hospital, Aalborg; Denmark;

^b Department of Endocrinology and Internal Medicine, Aarhus University Hospital, Aarhus, Denmark.

Holland-Bill L, Christiansen CF, Ulrichsen SP, Ring T^a, Lunde Jørgensen JO^b, Sørensen HT.

Preadmission diuretic use and mortality in patients hospitalized with hyponatremia: a propensity score-matched cohort study.

Am J Ther. 2019;26(1):e79-e91.

PMID: 28005557

Collaboration with: ^a Department of Nephrology, Aalborg University Hospital, Aalborg, Denmark;

^b Department of Endocrinology and Internal Medicine, Aarhus University Hospital, Aarhus, Denmark.

Horváth-Puhó E, Suttorp MM^a, Frederiksen H^b, Hoekstra T^a, Dekkers OM^a, Pedersen L, Cannegieter SC^a, Dekker FW^a, Sørensen HT.

Erythropoiesis-stimulating agents and cardiovascular events in patients with myelodysplastic syndrome and multiple myeloma.

Clin Epidemiol. 2018;10:1371-1380.

PMID: 30310329

Collaboration with: ^a Department of Clinical Epidemiology, Leiden University Medical Center, Leiden, The Netherlands; ^b Department of Haematology, Odense University Hospital, Odense, Denmark.

Jeppesen AN^a, Christiansen CF, Frøslev T, Sørensen HT.

Hospitalization rates and prognosis of patients with anaphylactic shock in Denmark from 1995 through 2012.

J Allergy Clin Immunol. 2016;137:1143-7.

PMID: 26691436

Collaboration with: ^a Research Center for Emergency Medicine, Aarhus University Hospital, Aarhus, Denmark.

Kim K^a, Thomsen RW, Nicolaisen SK, Hasvold LP^b, Palaka E^c, Sørensen HT.

Healthcare resource utilisation and cost associated with elevated potassium levels: a Danish population-based cohort study.

BMJ Open. 2019;9(4):e026465.

PMID: 30940761

Collaboration with: ^a Health Economics, AstraZeneca Nordic-Baltic, Södertälje, Sweden; ^b Medical Department, AstraZeneca Nordic, Oslo, Norway; ^c Global Health Economics, AstraZeneca, Cambridge, UK.

Klebaner K^a, Hamilton-Dutoit S^b, Ahern T^c, Crawford A^a, Jakobsen T^b, Cronin-Fenton DP, Damkier P^d, Janssen E^e, Kjaersgaard A, Ording AG, Søiland H^{f,g}, Sørensen HT, Lash TL^a, Hellberg Y^b.

Apolipoprotein D expression does not predict breast cancer recurrence among tamoxifen-treated patients.

PLoS One. 2017;12:e0171453.

PMID: 28301514

Collaboration with: ^a Department of Epidemiology, Rollins School of Public Health, Emory University, Atlanta, GA, USA; ^b Institute of Pathology, Aarhus University Hospital, Aarhus, Denmark; ^c Departments of Surgery and Biochemistry, University of Vermont College of Medicine, Burlington, VT, USA; ^d Department of Clinical Chemistry & Pharmacology, Odense University Hospital, Odense, Denmark; ^e Department of Pathology, Stavanger University Hospital, Stavanger, Norway; ^f Department of Breast and Endocrine Surgery, Stavanger University Hospital, Stavanger, Norway; ^g Department of Clinical Science, University of Bergen, Bergen, Norway.

Kornum JB^a, Farkas DK, Sværke C, Severinsen MT^b, Thomsen RW, Sørensen HT.

Cancer Risk and Prognosis after a Hospital Contact for an Elevated Erythrocyte Sedimentation Rate.

Cancer Epidemiol Biomarkers Prev. 2019;28(1):225-232.

PMID: 30352816

Collaboration with: ^a Department of Clinical Microbiology, Aalborg University Hospital, Aalborg, Denmark;

^b Department of Hematology, Aalborg University Hospital, Aalborg, Denmark.

Laugesen K, Byrjalsen A^a, Frøslev T, Olsen M, Sørensen HT.

Use of glucocorticoids during pregnancy and risk of attention deficit hyperactivity disorder in offspring: a nationwide Danish cohort study.

BMJ Open. 2017;7:e016825.

PMID: 28947451

Collaboration with: ^a Department of Clinical Genetics, Rigshospitalet, Copenhagen, Denmark.

Laugesen K, Jørgensen JOL^a, Sørensen HT, Petersen I^b.

Systemic glucocorticoid use in Denmark: a population-based prevalence study.

BMJ Open. 2017;7:e015237.

PMID: 28554927

Collaboration with: ^a Department of Endocrinology and Internal Medicine, Aarhus University Hospital,

Aarhus, Denmark; ^b Department of Primary Care and Population Health, University College London, London, UK.

Laugesen K, Baggesen LM, Schmidt SAJ, Glymour MM^a, Lasgaard M^{b,c}, Milstein A^d, Sørensen HT^e, Adler NE^f, Ehrenstein V.

Social isolation and all-cause mortality: a population-based cohort study in Denmark.

Sci Rep. 2018;8:4731.

PMID: 29549355

Collaboration with: ^a Department of Epidemiology and Biostatistics, University of California, San Francisco, CA, USA; ^b Central Denmark Region, DEFACTUM, Aarhus, Denmark; ^c Department of Psychology, University of Southern Denmark, Odense, Denmark; ^d The Clinical Excellence Research Center (CERC), Stanford University School of Medicine, Stanford, CA, USA; ^e Department of Health Research & Policy, Stanford University, Stanford, CA, USA; ^f Departments of Psychiatry and Pediatrics, University of California, San Francisco, CA, USA.

Lauridsen MD^a, Gammelager H^b, Schmidt M^c, Rasmussen TB, Shaw RE^d, Bøtker HE^c, Sørensen HT, Christiansen CF.

Acute kidney injury treated with renal replacement therapy and 5-year mortality after myocardial infarction-related cardiogenic shock: a nationwide population-based cohort study.

Crit Care. 2015;19:452.

PMID: 26715162

Collaboration with: ^a California Pacific Medical Institute Research Institute, San Francisco, CA, USA;

^b Department of Anesthesiology and Intensive Care Medicine, Aarhus University Hospital, Aarhus,

Denmark; ^c Department of Cardiology, Aarhus University Hospital, Aarhus, Denmark; ^d Division of

Cardiology, California Pacific Medical Center, San Francisco, CA, USA.

Li L^a, Wang Z^{a,b}, Liang H^a, Yang F^a, Yuan W^a, Gelaye B^c, Yu Y, Miao M^a, Nørgaard M, Li J.

Risk of childhood cerebral palsy following prenatal exposure to β 2-adrenergic receptor agonist: a nationwide cohort study.

PLoS One. 2018;13(8):e0202078.

PMID: 30114199

Collaboration with: ^a Key Lab. of Reproduction Regulation of NPFPC, SIPPR, IRD, Fudan University, Shanghai, China; ^b School of Public Health, Fudan University, Shanghai, China; ^c Department of Epidemiology, Harvard T. H. Chan School of Public Health, Boston, USA.

Lindahl LM^a, Heide-Jørgensen U, Pedersen P, Sørensen HT, Iversen L^a.

Risk of acute myocardial infarction or stroke in patients with mycosis fungoides and parapsoriasis.

Acta Derm Venereol. 2016;96:530-4.

PMID: 26576854

Collaboration with: ^a Department of Dermatology, Aarhus University Hospital, Aarhus, Denmark.

Liu X^a, Agerbo E^{a,b,c}, Li J^d, Dharmage SC^e, Thomsen RW, Olsen J^f, Munk-Olsen T^a.

Maternal pregestational or gestational diabetes and childhood wheezing: a population-based cohort study.

Allergy. 2018;73(11):2247-2250.

PMID: 29987908

Collaboration with: ^a The National Center for Register-Based Research, Aarhus University, Aarhus, Denmark; ^b CIRRAU-Centre for Integrated Register-Based Research, Aarhus University, Aarhus, Denmark; ^c Lundbeck Foundation Initiative for Integrative Psychiatric Research, iPSYCH, Aarhus, Denmark; ^d Ministry of Education - Shanghai Key Laboratory of Children's Environmental Health, Xinhua Hospital, Shanghai Jiao Tong University School of Medicine, Shanghai, China; ^e Allergy and Lung Health Unit, School of Population and Global Health, University of Melbourne, Melbourne, Victoria, Australia; ^f Department of Epidemiology, Fielding School of Public Health, University of California, Los Angeles, CA, USA.

Liu X^a, Agerbo E^{a,b,c}, Schlünssen V^{d,e}, Wright RJ^f, Li J, Munk-Olsen T^a.

Maternal asthma severity and control during pregnancy and risk of offspring asthma.

J Allergy Clin Immunol. 2018;141(3):886-892.e3.

PMID: 28712803

Collaboration with: ^a The National Center for Register-based Research, Aarhus University, Aarhus, Denmark; ^b CIRRAU-Centre for Integrated Register-based Research, Aarhus University, Aarhus, Denmark; ^c The Lundbeck Foundation Initiative for Integrative Psychiatric Research, iPSYCH, Aarhus, Denmark; ^d Section for Environmental and Occupational Medicine, Department of Public Health, Aarhus University, Aarhus, Denmark; ^e National Research Center for the Working Environment, Copenhagen, Denmark; ^f Department of Pediatrics, Kravis Children's Hospital, Icahn School of Medicine at Mount Sinai, New York, NY, USA.

Liu X^a, Chen J^b, Olsen J^c, Schlünssen V^{d,e}, Momen N^f, Li J.

Prenatal exposure to maternal bereavement and offspring psoriasis: a Danish nationwide cohort study.

Br J Dermatol. 2017;176:659-66.

PMID: 27925154

Collaboration with: ^a The National Centre for Register-based Research, Aarhus University, Aarhus, Denmark; ^b Key Laboratory of Reproduction Regulation of NPFPC, SIPPR, IRD, Fudan University, Shanghai, China; ^c Department of Epidemiology, Fielding School of Public Health, University of California, Los Angeles, CA, USA; ^d Section for Environmental and Occupational Medicine, Department of Public

Health, Aarhus University, Aarhus, Denmark; ^e National Research Center for the Working Environment, Copenhagen, Denmark; ^f Section for Epidemiology, Department of Public Health, Aarhus University, Denmark.

Lund JL^a, Horváth-Puhó E, Komjáthiné Szépligeti S, Sørensen HT, Pedersen L, Ehrenstein V, Stürmer T^a.
Conditioning on future exposure to define study cohorts can induce bias: the case of low-dose acetylsalicylic acid and risk of major bleeding.

Clin Epidemiol. 2017;9:611-26.

PMID: 29200891

Collaboration with: ^a Department of Epidemiology, University of North Carolina, Chapel Hill, NC, USA.

Lundbo LF^{a,b,c}, Sørensen HT, Clausen LN^a, Hollegaard MV^d, Hougaard DM^d, Konradsen HB^e, Harboe ZB^{f,g}, Nørgaard M, Benfield T^{a,b,c}.

Mannose-binding lectin gene, MBL2, polymorphisms do not increase susceptibility to invasive meningococcal disease in a population of Danish children.

Open Forum Infect Dis. 2015;2(4):ofv127.

PMID: 26464842

Collaboration with: ^a Department of Infectious Diseases, Hvidovre Hospital, University of Copenhagen, Hvidovre, Denmark; ^b Clinical Research Centre, Hvidovre Hospital, University of Copenhagen, Hvidovre, Denmark; ^c Faculty of Health Sciences, University of Copenhagen, Copenhagen, Denmark; ^d Danish Centre for Neonatal Screening, Department for Congenital Disorders, Statens Serum Institut, Copenhagen, Denmark; ^e Division of Diagnostics and Infection Control, Statens Serum Institut, Copenhagen, Denmark; ^f Department of Microbiological Surveillance and Research, Statens Serum Institut, Copenhagen, Denmark; ^g Department for Pulmonary and Infectious Diseases, North Zealand Hospital Hillerød, Hillerød, Denmark.

Lundbo LF^{a,b,c}, Harboe ZB^{d,e}, Clausen LN^a, Hollegaard MV^f, Sørensen HT, Hougaard DM^f, Konradsen HB^d, Nørgaard M, Benfield T^{a,b,c}.

Genetic variation in NFKBIE is associated with increased risk of pneumococcal meningitis in children.

EBioMedicine. 2015;3:93-9.

PMID: 26870821

Collaboration with: ^a Department of Infectious Diseases, Hvidovre Hospital, University of Copenhagen, Hvidovre, Denmark; ^b Clinical Research Centre, Hvidovre Hospital, University of Copenhagen, Hvidovre, Denmark; ^c Faculty of Health Sciences, University of Copenhagen, Copenhagen, Denmark; ^d Division of Diagnostics and Infection Control, Statens Serum Institut, Copenhagen, Denmark; ^e Department for Pulmonary and Infectious Diseases, North Zealand Hospital Hillerød, Hillerød, Denmark; ^f Danish Centre for Neonatal Screening, Department for Congenital Disorders, Statens Serum Institut, Copenhagen, Denmark.

Medici CM^a, Gradus JL^{b,c,d}, Pedersen L, Sørensen HT^e, Østergaard SD^f, Christiansen FC.

No impact of preadmission anti-inflammatory drug use on risk of depression and anxiety after critical illness.

Critical Care Medicine. 2017;45:1635-41.

PMID: 28920927

Collaboration with: ^a Psychiatric Research Academy, Department of Affective Disorders, Aarhus University Hospital, Risskov, Denmark; ^b National Center for PTSD, VA Boston Healthcare System, Boston, MA, USA; ^c Department of Psychiatry, Boston University, Boston, MA, USA; ^d Department of Epidemiology, Boston University, Boston, MA, USA; ^e Department of Health Research and Policy (Epidemiology), Stanford University, Stanford, CA, USA; ^f Psychosis Research Unit, Aarhus University Hospital, Risskov, Denmark.

Miret M^a, Horváth-Puhó E, Déruaz-Luyet A^b, Sørensen HT, Ehrenstein V.

Potential paraneoplastic syndromes and selected autoimmune conditions in patients with non-small cell lung cancer and small cell lung cancer: a population-based cohort study.

PLoS One. 2017;12:e0181564.

PMID: 28767671

Collaboration with: ^a Nestlé Health Science, Vevey, Switzerland; ^b Boehringer Ingelheim, Global Epidemiology, Ingelheim am Rhein, Germany.

Momen NC, Arendt LH^a, Ernst A^a, Olsen J^b, Li J, Gissler M^{c,d}, Ramlau-Hansen CH^a.

Pregnancy-associated cancers and birth outcomes in children: a Danish and Swedish population-based register study.

BMJ Open. 2018;8(12):e022946.

PMID: 30518582

Collaboration with: ^a Department of Public Health, Aarhus University, Aarhus, Denmark; ^b Department of Epidemiology, Fielding School of Public Health, University of California Los Angeles, Los Angeles, CA, USA; ^c National Institute for Health and Welfare, Helsinki, Finland; ^d Department of Neurobiology, Karolinska Institute, Stockholm, Sweden.

Mor A, Berencsi K, Nielsen JS^a, Rungby J^{b,c}, Friberg S^a, Brandslund I^a, Christiansen JS^{d,t}, Vaag A^e, Beck-Nielsen H^a, Sørensen HT, Thomsen RW.

Rates of community-based antibiotic prescriptions and hospital-treated infections in individuals with and without type 2 diabetes: a Danish nationwide cohort study, 2004-2012.

Clin Infect Dis. 2016;63:501-11.

PMID: 27353662

Collaboration with: ^a Department of Endocrinology, Danish Centre for Strategic Research in Type 2 Diabetes, Diabetes Research Centre, Odense University Hospital, Odense, Denmark; ^b Center for Diabetes Research, Gentofte University Hospital, Copenhagen, Denmark; ^c Institute for Biomedicine, Aarhus University, Aarhus, Denmark; ^d Department of Internal Medicine and Endocrinology, Institute of Clinical Medicine, Aarhus University Hospital, Aarhus, Denmark; ^e Department of Endocrinology, Diabetes and Metabolism, Rigshospitalet and Copenhagen University, Copenhagen, Denmark.

Mor A, Dekkers OM^a, Nielsen JS^b, Beck-Nielsen H^b, Sørensen HT, Thomsen RW.

Impact of glycemic control on risk of infections in patients with type 2 diabetes: a population-based cohort study.

Am J Epidemiol. 2017;186:227-236.

PMID: 28459981

Collaboration with: ^a Department of Endocrinology and Metabolic Diseases, Leiden University Medical Center, Leiden, The Netherlands; ^b Danish Centre for Strategic Research in Type 2 Diabetes, Diabetes Research Centre, Department of Endocrinology, Odense University Hospital, Odense, Denmark.

Mor A, Petersen I^a, Sørensen HT, Thomsen RW.

Metformin and other glucose-lowering drug initiation and rates of community-based antibiotic use and hospital-treated infections in patients with type 2 diabetes: a Danish nationwide population-based cohort study.

BMJ Open. 2016;6:e011523.

PMID: 27543589

Collaboration with: ^a Research Department of Primary Care and Population Health, University College London, London, UK.

Munch T, Christiansen CF, Pedersen L, Sørensen HT^a.

Impact of preadmission opioid treatment on 1-year mortality following nonsurgical intensive care.

Crit Care Med. 2018;46:860-8.

PMID: 29528945

Collaboration with: ^a Department of Health Research and Policy (Epidemiology), Stanford University, Stanford, CA, USA.

Nielsen LH^a, Bøtker HE^b, Sørensen HT, Schmidt M, Pedersen L, Sand NP^c, Jensen JM^b, Steffensen FH^a, Tilsted HH^d, Bøttcher M^e, Diederichsen A^f, Lambrechtsen J^g, Kristensen LD^h, Øvrehus KA^b, Mickley H^f, Munkholm H^a, Gøtzsche O^b, Husain M^c, Knudsen LL^e, Nørgaard BL^b.

Prognostic assessment of stable coronary artery disease as determined by coronary computed tomography angiography: a Danish multicentre cohort study.

Eur Heart J. 2017;38:413-421.

PMID: 27941018

Collaboration with: ^a Department of Cardiology, Lillebaelt Hospital-Vejle, Vejle, Denmark; ^b Department of Cardiology, Aarhus University Hospital, Aarhus, Denmark; ^c Department of Cardiology, Hospital of South West Jutland, Esbjerg, Denmark; ^d Department of Cardiology, Aalborg University Hospital, Aalborg, Denmark; ^e Department of Cardiology, Regional Hospital Herning, Herning, Denmark; ^f Department of Cardiology, Odense University Hospital, Odense, Denmark; ^g Department of Cardiology, Svendborg Hospital, Svendborg, Denmark; ^h Department of Cardiology, Regional Hospital Silkeborg, Silkeborg, Denmark.

Obel N^a, Dessau RB^b, Krogfelt KA^c, Bodilsen J^d, Andersen NS^e, Møller JK^f, Roed C^g, Omland LH^g, Christiansen CB^h, Ellermann-Eriksen Sⁱ, Bangsborg JMⁱ, Hansen K^k, Benfield TL^l, Rothman KJ^m, Sørensen HT, Andersen CØⁿ, Lebech AM^g.

Long term survival, health, social functioning, and education in patients with European Lyme neuroborreliosis: nationwide population based cohort study.

BMJ. 2018;361:k1998.

PMID: 29848547

Collaboration with: ^a Department of Infectious Diseases, Copenhagen University Hospital, Rigshospitalet, Copenhagen, Denmark; ^b Department of Clinical Microbiology, Slagelse Hospital, Slagelse, Denmark; ^c Bacteria, Parasites and Fungi Department, Statens Serum Institute, Copenhagen, Denmark; ^d Department of Clinical Microbiology and Infectious Diseases, Aalborg University Hospital, Aalborg, Denmark; ^e Clinical Center for Emerging and Vector-borne Infections, Odense University Hospital, Odense, Denmark; ^f Department of Clinical Microbiology, Vejle Hospital, Vejle, Denmark; ^g Department of Infectious Diseases, Copenhagen University Hospital, Rigshospitalet, Copenhagen, Denmark; ^h Department of Clinical Microbiology, Copenhagen University Hospital, Rigshospitalet, Copenhagen, Denmark; ⁱ Department of Clinical Microbiology, Aarhus University Hospital, Aarhus, Denmark; ^j Department of Clinical Microbiology, Herlev University Hospital, Copenhagen, Denmark; ^k Department of Neurology, Copenhagen University Hospital, Rigshospitalet, Copenhagen, Denmark; ^l Department of Infectious Diseases, Hvidovre University Hospital, Copenhagen, Denmark; ^m Department of Epidemiology, Boston University, Boston, MA, USA; ⁿ Department of Clinical Microbiology, Hvidovre University Hospital, Copenhagen, Denmark.

Olesen KKW^a, Madsen M, Lip GYH^b, Egholm G^a, Thim T, Jensen LO^c, Raungaard B^d, Nielsen JC^a, Bøtker HE^a, Sørensen HT, Maeng M^a.

Coronary artery disease and risk of adverse cardiac events and stroke.

Eur J Clin Invest. 2017;47:819-28.

PMID: 28804899

Collaboration with: ^a Department of Cardiology, Aarhus University Hospital, Aarhus, Denmark; ^b Institute

of Cardiovascular Sciences, City Hospital, University of Birmingham, Birmingham, UK; ^c Department of Cardiology, Odense University Hospital, Odense, Denmark; ^d Department of Cardiology, Aalborg University Hospital, Aalborg, Denmark.

Olsen M, Thygesen SK, Østergaard J^a, Nielsen H, Henderson VW^{b,c}, Ehrenstein V, Nørgaard M, Sørensen HT.

Hospital-diagnosed pertussis infection in children and long-term risk of epilepsy.

JAMA. 2015;314:1844-9.

PMID: 26529162

Collaboration with: ^a Department of Pediatrics, Aarhus University Hospital, Aarhus, Denmark; ^b Department of Health Research and Policy (Epidemiology), Stanford University, Stanford, CA, USA; ^c Department of Neurology and Neurological Sciences, Stanford University, Stanford, CA, USA.

Ording AG, Cronin-Fenton D, Ehrenstein V, Lash TL^a, Acquavella J, Rørth M^b, Sørensen HT.

Challenges in translating endpoints from trials to observational cohort studies in oncology.

Clin Epidemiol. 2016;8:195-200.

PMID: 27354827

Collaboration with: ^a Department of Epidemiology, Rollins School of Public Health, Emory University, Atlanta, GA, USA; ^b Department of Oncology, Rigshospitalet, Copenhagen, Denmark.

Ording AG, Heide-Jørgensen U, Christiansen CF, Nørgaard M, Acquavella J, Sørensen HT.

Site of metastasis and breast cancer mortality: a Danish nationwide registry-based cohort study.

Clin Exp Metastasis. 2017;34:93-101.

PMID: 27718076

Ording AG, Hováth-Puhó E, Adelborg K^a, Pedersen L, Prandoni P^b, Sørensen HT^c.

Thromboembolic and bleeding complications during oral anticoagulation therapy in cancer patients with atrial fibrillation: a Danish nationwide population-based cohort study.

Cancer Med. 2017;6:1165-72.

PMID: 28544489

Collaboration with: ^a Department of Cardiology, Aarhus University Hospital, Aarhus, Denmark; ^b Department of Cardiovascular Sciences, Vascular Medicine Unit, University of Padua, Padua, Italy; ^c Department of Health Research and Policy (Epidemiology), Stanford Medical School, Stanford, CA, USA.

Ording AG, Horváth-Puhó E, Lash TL^a, Ehrenstein V, Borre M^b, Vyberg M^c, Sørensen HT.

Does comorbidity interact with prostate cancer to increase mortality? A Danish cohort study of 45,326 prostate cancer patients diagnosed during 1995-2011.

Acta Oncol. 2016;55:611-8.

PMID: 26586474

Collaboration with: ^a Department of Epidemiology, Rollins School of Public Health, Emory University, Atlanta, GA, USA; ^b Department of Urology, Aarhus University Hospital, Aarhus, Denmark; ^c Institute of Pathology, Aalborg University Hospital, Aalborg, Denmark.

Ording AG, Horváth-Puhó E, Lash TL^a, Ehrenstein V, Borre M^b, Vyberg M^c, Sørensen HT.

Prostate cancer, comorbidity, and risk of venous thromboembolism: a cohort study of 44,035 Danish prostate cancer patients, 1995–2011.

Cancer. 2015;121:3692-9.

PMID: 26149752

Collaboration with: ^a Department of Epidemiology, Rollins School of Public Health, Emory University, Atlanta, GA, USA; ^b Department of Urology, Aarhus University Hospital, Aarhus, Denmark; ^c Institute of Pathology, Aalborg University Hospital, Aalborg, Denmark.

Ording AG, Horváth-Puhó E, Prandoni P^{a,b}, Leisner MZ, Farkas DK, Steffensen FH^c, Olsen M^d, Sørensen HT, Schmidt M^e.

Usefulness of CHA2DS2-VASc Score to Predict Stroke Risk Independent of Atrial Fibrillation.

Am J Cardiol. 2019;124(7):1059-1063.

PMID: 31376914

Collaboration with: ^a Department of Cardiothoracic and Vascular Science, Vascular Medicine Unit, University of Padua, Padua, Italy; ^b Arianna Foundation on Anticoagulation, Bologna, Italy. ^c Department of Cardiology, Lillebaelt Hospital, Vejle, Denmark; ^d Department of Radiology, Aarhus University Hospital, Aarhus, Denmark; ^e Department of Cardiology, Regional Hospital West Jutland, Herning, Denmark.

Ording AG, Nielsen ME^{a,b,c}, Smith AB^a, Horváth-Puhó E, Sørensen HT.

Venous thromboembolism and effect of comorbidity in bladder cancer: a Danish nationwide cohort study of 13,809 patients diagnosed between 1995 and 2011.

Urol Oncol. 2016;34:292.e1-8.

PMID: 26971189

Collaboration with: ^a Department of Urology, University of North Carolina School of Medicine, Chapel Hill, NC, USA; ^b Department of Epidemiology, University of North Carolina School of Public Health, Chapel Hill, NC, USA; ^c Department of Health Policy and Management, University of North Carolina School of Public Health, Chapel Hill, NC, USA.

Ording AG, Öztürk B, Spindler KG^{a,b}, Sørensen HT, McCusker M^c, Ehrenstein V.

KRAS mutation status, comorbidity, and mortality in patients with metastatic colorectal cancer in Denmark.

Acta Oncol. 2018;57(12):1727-1729.

PMID: 30264648

Collaboration with: ^a Department of Experimental Clinical Oncology, Aarhus University Hospital, Aarhus, Denmark; ^b Department of Oncology, Aarhus University Hospital, Aarhus, Denmark; ^c Diagnostics Information Solutions, F Hoffmann-La Roche AG, Pleasanton, CA, USA.

Pedersen AB, Baggesen LM, Ehrenstein V, Pedersen L, Lasgaard M^{a,b}, Mikkelsen EM.

Perceived stress and risk of any osteoporotic fracture.

Osteoporos Int. 2016;27:2035-45.

PMID: 26786258

Collaboration with: ^a Public Health and Quality Improvement, Central Denmark Region, Aarhus, Denmark; ^b Department of Psychology, Southern University of Denmark, Odense, Denmark.

Pedersen AB, Christiansen CF, Gammelager H, Kahlert J, Sørensen HT.

Risk of acute renal failure and mortality after surgery for a fracture of the hip: a population-based cohort study.

Bone Joint J. 2016;98-B:1112-8.

PMID: 27482026

Pedersen AB, Cronin Fenton D, Nørgaard M, Kristensen NR, Kuno Møller B^a, Erikstrup C^a.

Body mass index, risk of allogeneic red blood cell transfusion, and mortality in elderly patients undergoing hip fracture surgery.

Osteoporos Int. 2016;27:2765-75.

PMID: 27099965

Collaboration with: ^a Department of Clinical Immunology, Aarhus University Hospital, Aarhus, Denmark.

Pedersen AB, Ehrenstein V, Szépligeti SK, Lunde A^a, Lagerros YT^b, Westerlund A^c, Tell GS^a, Sørensen HT.

Thirty-five-year trends in first-time hospitalization for hip fracture, 1-year mortality, and the prognostic impact of comorbidity: a Danish nationwide cohort study, 1980-2014.

Epidemiology. 2017;28:898-905.

PMID: 28767515

Collaboration with: ^a Department of Global Public Health and Primary Care, University of Bergen, Bergen, Norway; ^b Clinical Epidemiology Unit, Department of Medicine, Karolinska Institutet, Solna, Sweden; ^c Centre for Pharmacoepidemiology, Department of Medicine, Karolinska Institutet, Solna, Sweden.

Pedersen AB, Ehrenstein V, Szépligeti SK, Sørensen HT^a.

Hip fracture, comorbidity, and the risk of myocardial infarction and stroke: a Danish nationwide cohort study, 1995-2015.

J Bone Miner Res. 2017;32:2339-46.

PMID: 28833527

Collaboration with: ^a Department of Health Research & Policy (Epidemiology), Stanford University, Stanford, CA, USA.

Pedersen AB, Gammelager H, Kahlert J, Sørensen HT, Christiansen CF.

Impact of body mass index on risk of acute kidney injury and mortality in elderly patients undergoing hip fracture surgery.

Osteoporos Int. 2017;28:1087-97.

PMID: 27866215

Pedersen AB, Horváth-Puhó E, Ehrenstein V, Rørth M, Sørensen HT.

Frozen shoulder and risk of cancer: a population-based cohort study.

Br J Cancer. 2017;117:144-7.

PMID: 28524156

Pedersen AB, Vandenbroucke J^a, Horváth-Puhó E, Sørensen HT.

Venous thromboembolism and risk of cancer in patients with rheumatoid arthritis.

J Thromb Haemost. 2017;15:2325-32.

PMID: 28913891

Collaboration with: ^a Leiden University Medical Center, Leiden, The Netherlands.

Pedersen LH^a, Petersen OB^a, Nørgaard M, Ekelund C^b, Pedersen L, Tabor A^b, Sørensen HT.

Linkage between the Danish National Health Service Prescription Database, the Danish Fetal Medicine Database, and other Danish registries as a tool for the study of drug safety in pregnancy.

Clin Epidemiol. 2016;8:91-5.

PMID: 27274312

Collaboration with: ^a Department of Obstetrics and Gynecology, Institute of Clinical Medicine, Aarhus University Hospital, Aarhus, Denmark; ^b Department of Fetal Medicine, Rigshospitalet, Copenhagen, Denmark.

Pedersen RN, Bhaskaran K^a, Heide-Jørgensen U, Nørgaard M, Christiansen PM^{b,c}, Kroman N^{c,d}, Sørensen HT, Cronin-Fenton DP.

Breast cancer recurrence after reoperation for surgical bleeding.

Br J Surg. 2017;104:1665-74.

PMID: 28782800

Collaboration with: ^a Department of Non-Communicable Disease Epidemiology, London School of Hygiene and Tropical Medicine, London, UK; ^b Breast and Endocrine Section, Department of Surgery P, Aarhus University Hospital, Aarhus, Denmark; ^c Danish Breast Cancer Group, Copenhagen, Denmark; ^d Department of Breast Surgery, Rigshospitalet, Copenhagen, Denmark.

Pedersen SB^a, Hjortshøj SP^b, Bøtker HE^a, Farkas DK, Schmidt M^a, Sørensen HT, Nielsen JC^a.

Venous thromboembolism in patients with implantable cardioverter-defibrillators.

Europace. 2017;19:991-1001.

PMID: 27256414

Collaboration with: ^a Department of Cardiology, Aarhus University Hospital, Aarhus, Denmark; ^b Department of Cardiology, Aalborg University Hospital, Aalborg, Denmark.

Plana-Ripoll O^a, Basso O^{b,c}, László KD^d, Olsen J^e, Parner E^f, Cnattingius S^g, Obel C^h, Li J.

Reproduction after the loss of a child. A population-based matched cohort study.

Human Reproduction. 2018;33(8):1557-1565.

PMID: 30010921

Collaboration with: ^a National Center for Register-based Research, Aarhus University, Aarhus, Denmark; ^b Department of Obstetrics and Gynecology, McGill University Health Centre, Royal Victoria Hospital, Montreal, QC, Canada; ^c Department of Epidemiology, Biostatistics and Occupational Health, McGill University, Montreal, QC, Canada; ^d Department of Public Health Sciences, Karolinska Institutet, Stockholm, Sweden; ^e Department of Epidemiology, Fielding School of Public Health, University of California, Center for Health Sciences, Los Angeles, CA, USA; ^f Section of Biostatistics, Department of Public Health, Aarhus University, Aarhus, Denmark; ^g Clinical Epidemiology Unit, Department of Medicine Solna, Karolinska Institutet and Karolinska University Hospital, Stockholm, Sweden; ^h Section of General Practice, Department of Public Health, Aarhus University, Aarhus, Denmark.

Rasmussen TB, Ulrichsen SP, Nørgaard M.

Use of risk-adjusted CUSUM charts to monitor 30-day mortality in Danish hospitals.

Clin Epidemiol. 2018;10:445-56.

PMID: 29713201

Ravn S^a, Heide-Jørgensen U, Christiansen CF, Verwaal VJ^a, Hagemann-Madsen RH^b, Iversen LH^{a,c}.

Overall risk and risk factors for metachronous peritoneal metastasis after colorectal cancer surgery: a nationwide cohort study.

BJS Open. 2020;4(2):284-292.

PMID: 32207578

Collaboration with: ^a Department of Surgery, Aarhus University Hospital, Aarhus, Denmark; ^b Department of Pathology, Lillebaelt Hospital, Vejle, Denmark; ^c Danish Colorectal Cancer Group, Copenhagen, Denmark.

Schmidt M^a, Horváth-Puhó E, Ording AG, Bøtker HE^b, Lash TL^c, Sørensen HT.

The interaction effect of cardiac and non-cardiac comorbidity on myocardial infarction mortality: A nationwide cohort study.

Int J Cardiol. 2020;308:1-8.

PMID: 32057473

Collaboration with: ^a Department of Cardiology, Regional Hospital West Jutland, Herning, Denmark;

^b Department of Cardiology, Aarhus University Hospital, Aarhus, Denmark; ^c Department of Epidemiology, Rollins School of Public Health, Emory University, Atlanta, GA, USA.

Schmidt M^{a,b}, Mansfield KE^a, Bhaskaran K^a, Nitsch D^a, Sørensen HT, Smeeth L^a, Tomlinson LA^a.
Adherence to guidelines for creatinine and potassium monitoring and discontinuation following renin–angiotensin system blockade: a UK general practice-based cohort study.

BMJ Open. 2017;7:e012818.

PMID: 28069618

Collaboration with: ^a Department of Non-Communicable Disease Epidemiology, London School of Hygiene and Tropical Medicine, London, UK; ^b Department of Internal Medicine, Regional Hospital of Randers, Randers, Denmark.

Schmidt M^{a,b}, Mansfield KE^a, Bhaskaran K^a, Nitsch D^a, Sørensen HT, Smeeth L^a, Tomlinson LA^a.
Serum creatinine elevation after renin-angiotensin system blockade and long term cardiorenal risks: cohort study.

BMJ. 2017;356:j791.

PMID: 28279964

Collaboration with: ^a Department of Non-Communicable Disease Epidemiology, London School of Hygiene and Tropical Medicine, London, UK; ^b Department of Internal Medicine, Regional Hospital of Randers, Randers, Denmark.

Schmidt M^{a,b}, Maeng M^b, Madsen M, Sørensen HT, Jensen LO^c, Jakobsen CJ^d.
The Western Denmark Heart Registry: its influence on cardiovascular patient care.

J Am Coll Cardiol. 2018;71(11):1259-1272.

PMID: 29544611

Collaboration with: ^a Department of Cardiology, Regional Hospital West Jutland, Herning, Denmark; ^b Department of Cardiology, Aarhus University Hospital, Aarhus, Denmark; ^c Department of Cardiology, Odense University Hospital, Odense, Denmark; ^d Department of Anesthesia and Intensive Care, Aarhus University Hospital, Aarhus, Denmark.

Schmidt M^a, Schmidt SAJ^b, Adelborg K^c, Sundbøll J, Laugesen K, Ehrenstein V, Sørensen HT.
The Danish health care system and epidemiological research: from health care contacts to database records.

Clin Epidemiol. 2019;11:563-591. eCollection 2019.

PMID: 31372058

Collaboration with: ^a Department of Cardiology, Regional Hospital West Jutland, Herning, Denmark; ^b Department of Dermatology, Aarhus University Hospital, Aarhus, Denmark; ^c Department of Clinical Biochemistry, Aarhus University Hospital, Aarhus, Denmark.

Schmidt M, Schmidt SA, Sandegaard JL^a, Ehrenstein V, Pedersen L, Sørensen HT.
The Danish National Patient Registry: a review of content, data quality, and research potential.

Clin Epidemiol. 2015;7:449-490.

PMID: 26604824

Collaboration with: ^a Department of Health Documentation, State Serum Institute, Copenhagen, Denmark (Subprogram 3).

Schmidt M^a, Szépligeti S, Hovath-Puho E, Pedersen L, Bøtker HE^b, Sørensen HT.

Long-term survival among patients with myocardial infarction before age 50 compared with the general population: a Danish nationwide cohort study.

Circ Cardiovasc Qual Outcomes. 2016;9:523-31.

PMID: 27576336

Collaboration with: ^a Department of Internal Medicine, Regional Hospital of Randers, Randers, Denmark;

^b Department of Cardiology, Aarhus University Hospital, Aarhus, Denmark.

Schmidt M^a, Sørensen HT^b, Pedersen L.

Diclofenac use and cardiovascular risks: series of nationwide cohort studies.

BMJ. 2018;362:k3426.

PMID: 30181258

Collaboration with: ^a Department of Cardiology, Regional Hospital West Jutland, Herning, Denmark;

^b Department of Health Research & Policy (Epidemiology), Stanford University, Stanford, CA, USA.

Schmidt M^a, Ulrichsen SP, Pedersen L, Bøtker HE^b, Nielsen JC^b, Sørensen HT^c.

30-year nationwide trends in incidence of atrial fibrillation in Denmark and associated 5-year risk of heart failure, stroke, and death.

Int J Cardiol. 2016;225:30-6.

PMID: 27705839

Collaboration with: ^a Department of Internal Medicine, Regional Hospital of Randers, Randers, Denmark;

^b Department of Cardiology, Aarhus University Hospital, Aarhus, Denmark; ^c Department of Health Research & Policy (Epidemiology), Stanford University, Stanford, CA, USA.

Schmidt M, Ulrichsen SP, Pedersen L, Bøtker HE^a, Sørensen HT.

Thirty-year trends in heart failure hospitalization and mortality rates and the prognostic impact of co-morbidity: a Danish nationwide cohort study.

Eur J Heart Fail. 2016;18:490-9.

PMID: 26868921

Collaboration with: ^a Department of Cardiology, Aarhus University Hospital, Aarhus, Denmark.

Schmidt SA, Kahlert J, Vestergaard M^a, Schönheyder HC^{b,c}, Sørensen HT.

Hospital-based herpes zoster diagnoses in Denmark: rate, patient characteristics, and all-cause mortality.

BMC Infect Dis. 2016;16:99.

PMID: 26932311

Collaboration with: ^a Research Unit and Section for General Practice, Department of Public Health, Aarhus University, Aarhus, Denmark (Subprogram 1); ^b Department of Clinical Microbiology, Aalborg University Hospital, Aalborg, Denmark; ^c Department of Clinical Medicine, Aalborg University, Aalborg, Denmark.

Schmidt SA, Ording AG, Horváth-Puhó E, Sørensen HT^a, Henderson VW^{a,b}.

Non-melanoma skin cancer and risk of Alzheimer's disease and all-cause dementia.

PLoS One. 2017;12:e0171527.

PMID: 28225789

Collaboration with: ^a Department of Health Research & Policy (Epidemiology), Stanford University, Stanford, CA, USA; ^b Department of Neurology & Neurological Sciences, Stanford University, Stanford, CA, USA.

Schmidt SA, Sørensen GV, Horváth-Puhó E, Pedersen L, Obel N^a, Petersen KL^b, Schönheyder HC^b, Sørensen HT.

Mortality in cancer patients previously diagnosed with herpes zoster in the hospital setting: a nationwide cohort study.

Br J Cancer. 2015;112:1822-6.

PMID: 25880013

Collaboration with: ^a Department of Infectious Diseases, Copenhagen University Hospital, Rigshospitalet, Copenhagen, Denmark; ^b California Pacific Medical Center Research Institute, San Francisco, CA, USA; ^c Department of Clinical Microbiology, Aalborg University Hospital, Aalborg, Denmark.

Schmidt SA, Veres K, Ording AG, Fogh K^a, Sørensen HT.

Venous ulcers and risk of occult hematological or other cancers: a nationwide cohort study.

Blood. 2016;128:874-7.

PMID: 27389716

Collaboration with: ^a Department of Dermatology, Aarhus University Hospital, Aarhus, Denmark.

Simonsen DF, Farkas DK, Horsburgh CR^a, Thomsen RW, Sørensen HT^a.

Increased risk of active tuberculosis after cancer diagnosis.

J Infect. 2017;74:590-8.

PMID: 28366685

Collaboration with: ^a Department of Epidemiology, Boston University School of Public Health, Boston, MA, USA.

Slagelse C, Gammelager H^a, Iversen LH^b, Sørensen HT, Christiansen CF.

Acute kidney injury and 1-year mortality after colorectal cancer surgery: a population-based cohort study.

BMJ Open. 2019;9(3):e024817.

PMID: 30872545

Collaboration with: ^a Department of Intensive Care, Aarhus University Hospital, Aarhus, Denmark;

^b Department of Surgery, Aarhus University Hospital, Aarhus, Denmark.

Stoffel EM^a, Erichsen R, Frøslev T, Pedersen L, Vyberg M^b, Koeppe E^a, Crockett SD^c, Hamilton SR^d, Sørensen HT, Baron JA^c.

Clinical and molecular characteristics of post-colonoscopy colorectal cancer: a population-based study.

Gastroenterology. 2016;151:870-8.

PMID: 27443823

Collaboration with: ^a Department of Internal Medicine, University of Michigan Health System, Ann Arbor, MI, USA; ^b Institute of Pathology, Aalborg University Hospital, Aalborg, Denmark; ^c Department of Internal Medicine, University of North Carolina at Chapel Hill, Chapel Hill, NC, USA; ^d Division of Pathology and Laboratory Medicine, The University of Texas, MD Anderson Cancer Center, Houston, TX, USA.

Sundbøll J^a, Adelborg K^a, Munch T, Frøslev T, Sørensen HT, Bøtker HE^a, Schmidt M^b.

Positive predictive value of cardiovascular diagnoses in the Danish National Patient Registry: a validation study.

BMJ Open 2016;6:e012832.

PMID: 27864249

Collaboration with: ^a Department of Cardiology, Aarhus University Hospital, Aarhus, Denmark;

^b Department of Internal Medicine, Regional Hospital of Randers, Randers, Denmark.

Sundbøll J^a, Darvalics B, Horváth-Puhó E, Adelborg K, Laugesen K, Schmidt M^b, Henderson VW^c, Sørensen HT^d.

Preadmission use of glucocorticoids and risk of cardiovascular events in patients with ischemic stroke.

J Thromb Haemost. 2018;16(11):2175-2183.

PMID: 30179297

Collaboration with: ^a Department of Cardiology, Aarhus University Hospital, Aarhus, Denmark; ^b Department of Cardiology, Regional Hospital West Jutland, Herning, Denmark; ^c Departments of Health Research and Policy (Epidemiology) and Neurology and Neurological Sciences, Stanford University, Stanford, CA, USA; ^d Department of Health Research and Policy (Epidemiology), Stanford University, Stanford, CA, USA.

Sundbøll J, Farkas DK, Adelborg K, Schapira L^a, Tamang S^b, Nørgaard M, Cullen MR^b, Cronin-Fenton D, Sørensen HT^a.

Risk of primary urological and genital cancers following incident breast cancer: a Danish population-based cohort study.

Breast Cancer Res Treat. 2020;184(3):825-837.

PMID: 32845432

Collaboration with: ^a Stanford Cancer Institute and Department of Medicine, Stanford University, Stanford, CA, USA; ^b Stanford Center for Population Health Sciences and Department of Medicine, Stanford University, Stanford, CA, USA.

Sundbøll J^a, Horváth-Puhó E, Adelborg K^a, Schmidt M^a, Pedersen L, Bøtker HE^a, Henderson VW^{b,c}, Toft Sørensen H^b.

Higher risk of vascular dementia in myocardial infarction survivors.

Circulation. 2018;137:567-77.

PMID: 29025764

Collaboration with: ^a Department of Cardiology, Aarhus University Hospital, Denmark; ^b Department of Health Research and Policy (Epidemiology), Stanford University, Stanford, CA, USA; ^c Department of Neurology and Neurological Sciences, Stanford University, Stanford, CA, USA

Sundbøll J, Horvath-Puhó E, Schmidt M, Dekkers OM^{a,b}, Christiansen CF, Pedersen L, Bøtker HE^c, Sørensen HT.

Preadmission use of glucocorticoids and 30-day mortality after stroke.

Stroke. 2016;47:829-35.

PMID: 26903585

Collaboration with: ^a Department of Clinical Epidemiology, Leiden University Medical Centre, Leiden, The Netherlands; ^b Department of Clinical Endocrinology and Metabolism, Leiden University Medical Centre, Leiden, The Netherlands; ^c Department of Cardiology, Aarhus University Hospital, Aarhus, Denmark.

Sundbøll J^a, Horváth-Puhó E, Schmidt M^a, Pedersen L, Henderson VW^{b,c}, Bøtker HE^a, Sørensen HT^b.

Long-term risk of stroke in myocardial infarction survivors: thirty-year population-based cohort study.

Stroke. 2016;47:1727-33.

PMID: 27301935

Collaboration with: ^a Department of Cardiology, Aarhus University Hospital, Aarhus, Denmark; ^b Department of Health Research and Policy (Epidemiology), Stanford University, Stanford, CA, USA; ^c Department of Neurological Sciences, Stanford University, Stanford, CA, USA.

Sundbøll J^a, Horváth-Puhó E, Adelborg K^a, Ording A, Schmidt M^a, Bøtker HE^a, Sørensen HT.
Risk of arterial and venous thromboembolism in patients with atrial fibrillation or flutter: a nationwide population-based cohort study.

Int J Cardiol. 2017;241:182-7.

PMID: 28473169

Collaboration with: ^a Department of Cardiology, Aarhus University Hospital, Aarhus, Denmark.

Sundbøll J, Schmidt M, Adelborg K, Pedersen L, Bøtker HE^a, Videbech P^b, Sørensen HT.
Impact of preadmission depression on mortality following myocardial infarction.

Br J Psych 2017;210:356-61.

PMID: 28254961

Collaboration with: ^a Department of Cardiology, Aarhus University Hospital, Aarhus, Denmark; ^b Psychiatric Centre Glostrup, Glostrup, Denmark.

Sundbøll J, Veres K, Horváth-Puhó E, Adelborg K, Sørensen HT.
Risk and prognosis of cancer after lower limb arterial thrombosis.

Circulation. 2018;138(7):669-677.

PMID: 29540440

Sundbøll J, Ångquist L^a, Adelborg K^b, Gjørde LK^a, Ording A, Sørensen TIA^{c,d}, Baker JL^{a,c}, Sørensen HT.
Changes in Childhood Body-Mass Index and Risk of Venous Thromboembolism in Adulthood.

J Am Heart Assoc. 2019;8(6):e011407.

PMID: 30873894

Collaboration with: ^a Center for Clinical Research and Prevention, Bispebjerg and Frederiksberg Hospital, Frederiksberg, Denmark; ^b Department of Clinical Biochemistry, Aarhus University Hospital, Aarhus, Denmark; ^c Novo Nordisk Foundation Center for Basic Metabolic Research, University of Copenhagen, Copenhagen, Denmark; ^d Department of Public Health, Section of Epidemiology, Faculty of Health and Medical Sciences, University of Copenhagen, Copenhagen, Denmark.

Svensson E, Henderson VW^{a,b}, Borghammer P^c, Horváth-Puhó E, Sørensen HT.

Constipation and risk of Parkinson's disease: a Danish population-based cohort study.

Parkinsonism Relat Disord. 2016;28:18-22.

PMID: 27234704

Collaboration with: ^a Department of Health Research and Policy (Epidemiology), Stanford University, Stanford, CA, USA; ^b Department of Neurological Sciences, Stanford University, Stanford, CA, USA; ^c Department of Nuclear Medicine & PET Centre, Aarhus University Hospital, Aarhus, Denmark.

Svensson E, Horváth-Puhó E, Thomsen RW, Djurhuus JC, Pedersen L, Borghammer P^a, Sørensen HT.
Vagotomy and subsequent risk of Parkinson's disease.

Ann Neurol. 2015;78:522-9.

PMID: 26031848

Collaboration with: ^a Department of Nuclear Medicine & PET Centre, Aarhus University Hospital, Aarhus, Denmark.

Søgaard KK, Adelborg K^a, Darvalics B, Horváth-Puhó E, Beyer-Westendorf J^{b,c}, Ageno W^d, Sørensen HT.
Risk of bleeding and arterial cardiovascular events in patients with splanchnic vein thrombosis in Denmark: a population-based cohort study.

Lancet Haematol. 2018;5(10):e441-e449.

PMID: 30201587

Collaboration with: ^a Department of Clinical Biochemistry, Aarhus University Hospital, Aarhus, Denmark;

^b Thrombosis Research Unit, Department of Medicine 1, Division of Hematology, University Hospital “Carl Gustav Carus”, Dresden, Germany; ^c King’s Thrombosis Service, Department of Hematology, King’s College London, London, UK; ^d Department of Medicine and Surgery, University of Insubria, Varese, Italy.

Søgaard KK, Darvalics B, Horváth-Puhó E, Sørensen HT.

Survival after splanchnic vein thrombosis: a 20-year nationwide cohort study.

Thromb Res. 2016;141:1-7.

PMID: 26945454

Søgaard KK, Farkas DK, Ehrenstein V, Bhaskaran K^a, Bøtker HE^b, Sørensen HT^c.

Pericarditis as a marker of occult cancer and a prognostic factor for cancer mortality.

Circulation. 2017;136:996-1006.

PMID: 28663234

Collaboration with: ^a Non-Communicable Diseases Epidemiology, London School of Hygiene and Tropical Medicine, London, UK; ^b Department of Cardiology, Aarhus University Hospital, Aarhus, Denmark; ^c Department of Health Research & Policy (Epidemiology), Stanford University, Stanford, CA, USA.

Søgaard KK, Farkas DK, Pedersen L, Lund JL^a, Thomsen RW, Sørensen HT.

Long-term risk of gastrointestinal cancers in persons with gastric or duodenal ulcers.

Cancer Med. 2016;5(6):1341-51.

PMID: 26923747

Collaboration with: ^a Department of Epidemiology, Gillings School of Global Public Health, University of North Carolina, Chapel Hill, NC, USA.

Søgaard KK, Farkas DK, Søgaard M, Schönheyder HC^a, Thomsen RW, Sørensen HT.

Gram-negative bacteremia as a clinical marker of occult malignancy.

J Infect. 2017;74:153-62.

PMID: 27838520

Collaboration with: ^a Department of Clinical Microbiology, Aalborg University Hospital, Aalborg, Denmark.

Søgaard KK^a, Farkas DK, Sørensen HT.

Pneumonia diagnosis in childhood and incidence of leukaemia, lymphoma and brain cancer: a Danish nationwide cohort study.

BMJ Open. 2017;7:e019860.

PMID: 29289943

Collaboration with: ^a Department of Clinical Microbiology, Aalborg University Hospital, Aalborg, Denmark.

Søgaard KK, Veres K, Nørgaard M, Djurhuus JC, Sørensen HT.

Pyelonephritis in persons after age 50 as a clinical marker of urogenital cancer.

Clin Microbiol Infect. 2018;pii: S1198-743X(18)30338-0.

PMID: 29654872

Søgaard M, Farkas DK, Ehrenstein E, Jørgensen JOJ^a, Dekkers OM^b, Sørensen HT.

Hypothyroidism and hyperthyroidism and breast cancer risk: a nationwide cohort study.

Eur J Endocrinol. 2016;174(4):409-14.

PMID: 26863886

Collaboration with: ^a Department of Endocrinology and Internal Medicine, Aarhus University Hospital, Aarhus, Denmark; ^b Departments of Endocrinology and Clinical Epidemiology, Leiden University Medical Center, Leiden, The Netherlands.

Søgaard M, Farkas DK, Ording AG, Sørensen HT, Cronin-Fenton D.

Conisation as a marker of persistent human papilloma virus infection and risk of breast cancer.

Br J Cancer. 2016;115:588-91.

PMID: 27253173

Sørensen HT^{a,b}.

I-determinants for a successful PhD or postdoctoral outcome.

Clin Epidemiol. 2016;8:297-303.

PMID: 27574466

The above manuscript was prepared during Prof. Sørensen's affiliation with Stanford University:

^a Department of Health Research and Policy (Epidemiology), Stanford University, Stanford, CA, USA;

^b Stanford's Center for Advanced Study in Behavioral Sciences, Stanford University, Stanford, CA, USA.

Sørensen TT^a, Horváth-Puhó E, Nørgaard M, Ehrenstein V, Henderson VW^b.

Risk of amyotrophic lateral sclerosis and other motor neuron disorders among patients with benign prostatic hyperplasia.

BMJ Open. 2019;4;9:e030015.

PMID: 31278107

Collaboration with: ^a Institute of Public Health, University of Copenhagen, Copenhagen, Denmark;

^b Departments of Epidemiology and of Neurology & Neurological Sciences, Stanford University, Stanford, CA, USA.

Thomsen AML, Pedersen AB, Kristensen NR, Møller BK^a, Erikstrup C^a, Christiansen PM^b, Nørgaard M, Cronin-Fenton D.

Use of prescription drugs and risk of postoperative red blood cell transfusion in breast cancer patients: a Danish population-based cohort study.

Breast Cancer Res. 2017;19:135.

PMID: 29273074

Collaboration with: ^a Department of Clinical Immunology, Aarhus University Hospital, Aarhus, Denmark;

^b Breast Surgery Unit, Aarhus University Hospital/Randers Regional Hospital, Aarhus, Denmark.

Thomsen RW, Nicolaisen SK, Adelborg K, Svensson E, Hasvold P^a, Palaka E^b, Pedersen L, Sørensen HT.

Hyperkalaemia in people with diabetes: occurrence, risk factors and outcomes in a Danish population-based cohort study.

Diabet Med. 2018;35(8):1051-1060.

PMID: 29790603

Collaboration with: ^a AstraZeneca Nordic, Medical Department, Etterstad, Oslo, Norway; ^b AstraZeneca, Global Payer Evidence, Cambridge, UK.

Thomsen RW, Nicolaisen SK, Hasvold P^a, Garcia-Sanchez R^b, Pedersen L, Adelborg K, Egffjord M^c, Egstrup K^d, Sørensen HT.

Elevated potassium levels in patients with congestive heart failure: occurrence, risk factors, and clinical outcomes: a Danish population-based cohort study.

J Am Heart Assoc. 2018;7(11).

PMID: 29789332

Collaboration with: ^a Medical Department, AstraZeneca Nordic, Oslo, Norway; ^b Global Medical Affairs, AstraZeneca, Gaithersburg, MD, USA; ^c Department of Nephrology, Rigshospitalet, Copenhagen University Hospital, Copenhagen, Denmark; ^d Department of Cardiology, Svendborg Hospital, Svendborg, Denmark.

Thygesen SK, Olsen M, Pedersen L, Henderson VW^{a,b}, Østergaard JR^c, Sørensen HT^a.

Respiratory distress syndrome in preterm infants and risk of epilepsy in a Danish cohort.

Eur J Epidemiol. 2018;33:313-21.

PMID: 28887607

Collaboration with: ^a Department of Health Research and Policy (Epidemiology), Stanford University, Stanford, CA, USA; Department of Neurology and Neurological Sciences, Stanford University, Stanford, CA, USA; ^c Department of Pediatrics, Aarhus University Hospital, Aarhus, Denmark.

Thygesen SK, Olsen M, Østergaard JR^a, Sørensen HT^b.

Respiratory distress syndrome in moderately late and late preterm infants and risk of cerebral palsy: a population-based cohort study.

BMJ Open. 2016;6:e011643.

PMID: 27729347

Collaboration with: ^a Department of Paediatrics, Aarhus University Hospital, Aarhus, Denmark; ^b Department of Health Research and Policy (Epidemiology), Stanford University, Stanford, CA, USA.

Tøttenborg SS^a, Thomsen RW, Johnsen SP, Nielsen H, Lange P^{a,b}.

Determinants of smoking cessation in patients with COPD treated in the outpatient setting.

Chest. 2016;150:554-62.

PMID: 27262226

Collaboration with: ^a Department of Public Health, Section of Social Medicine, University of Copenhagen, Copenhagen, Denmark; ^b Respiratory Section, Hvidovre Hospital, Hvidovre, Denmark.

Viborg S, Søgaard KK, Farkas DK, Nørrelund H, Pedersen L, Sørensen HT.

Lower gastrointestinal bleeding and risk of gastrointestinal cancer.

Clin Transl Gastroenterol. 2016;7:e162.

PMID: 27054580

Viborg S, Søgaard KK, Jepsen P^a.

Positive predictive value of peptic ulcer diagnosis codes in the Danish National Patient Registry.

Clin Epidemiol. 2017;9:261-6.

PMID: 28503076

Collaboration with: ^a Department of Hepatology and Gastroenterology, Aarhus University Hospital, Aarhus, Denmark.

Wise LA^a, Wesselink AK^a, Tucker KL^b, Saklani S^b, Mikkelsen EM, Cueto H, Riis AH, Trolle E^c, McKinnon CJ^a, Hahn KA^a, Rothman KJ^{a,d}, Sørensen HT, Hatch EE^a.

Dietary fat intake and fecundability in 2 preconception cohort studies.

Am J Epidemiol. 2018;187:60-74.

PMID: 28595290

Collaboration with: ^a Department of Epidemiology, School of Public Health, Boston University, Boston, MA, USA; ^b Department of Clinical Laboratory and Nutritional Sciences, College of Health Sciences, University of Massachusetts Lowell, Lowell, MA, USA; ^c Division of Risk Assessment and Nutrition, National Food Institute, Technical University of Denmark, Søborg, Denmark; ^d RTI Health Solutions, Research Triangle Park, NC, USA.

Würtz M^{a,b}, Schmidt M, Grove EL^a, Horváth-Puhó E, Christiansen CF, Sørensen HT.

Preadmission use of selective serotonin reuptake inhibitors and short-term mortality in diabetic patients hospitalized due to stroke.

J Intern Med. 2016;280:407-18.

PMID: 27138221

Collaboration with: ^a Department of Cardiology, Aarhus University Hospital, Aarhus, Denmark;

^b Department of Internal Medicine, Regional Hospital West, Herning, Denmark.

Yang F^a, Chen JP^a, Miao MH^a, Yuan W^a, Li L^a, Liang H^a, Ehrenstein V, Li J.

Risk of autism spectrum disorder in offspring following paternal use of selective serotonin reuptake inhibitors before conception: a population-based cohort study.

BMJ open. 2017;7(12):e016368.

PMID: 29275337

Collaboration with: ^a Key Laboratory of Reproduction Regulation of NPFPC, SIPPR, IRD, Fudan University, Shanghai, China.

Yang F^a, Liang H^a, Chen J^a, Yuan W^a, Nørgaard M, Li J.

Prenatal paternal selective serotonin reuptake inhibitors use and risk of ADHD in offspring.

Pediatrics. 2018;141(1). pii: e20171081.

PMID: 29229680

Collaboration with: ^a Key Laboratory of National Population and Family Planning Commission (NPFPC), Shanghai Institute of Planned Parenthood Research (SIPPR), Institute of Reproductive Development (IRD), Fudan University, Shanghai, China.

The RECORD Group

REporting of studies **C**onducted using **O**bservational **R**outinely-collected **D**ata (RECORD) is an international collaborative which develops reporting guidelines for studies conducted using routinely-collected health data (such as health administrative data, electronic medical record data, primary care surveillance data, and disease registries).

<http://www.record-statement.org/>

Prof. Henrik Toft Sørensen is on the steering committee for the RECORD Group.

Benchimol EI, Smeeth L, Guttman A, Harron K, Hemkens LG, Moher D, Petersen I, Sørensen HT, von Elm E, Langan SM; RECORD Working Committee.

[The REporting of studies Conducted using Observational Routinely-collected health Data (RECORD) statement]. [Article in German].

Z Evid Fortbild Qual Gesundhwes. 2016;115-116:33-48.

PMID: 27837958

Benchimol EI, Smeeth L, Guttman A, Harron K, Moher D, Petersen I, Sørensen HT, von Elm E, Langan SM; RECORD Working Committee.

The REporting of studies Conducted using Observational Routinely-collected health Data (RECORD) statement.

PLoS Med. 2015;12(10):e1001885.

PMID: 26440803

Nicholls SG, Langan SM, Sørensen HT, Petersen I, Benchimol EI.

The RECORD reporting guidelines: meeting the methodological and ethical demands of transparency in research using routinely-collected health data.

Clin Epidemiol. 2016;8:389-392.

PMID: 27799820

Nicholls SG, Quach P, von Elm E, Guttman A, Moher D, Petersen I, Sørensen HT, Smeeth L, Langan SM, Benchimol EI.

The REporting of studies Conducted using Observational Routinely-collected health Data (RECORD) statement: methods for arriving at consensus and developing reporting guidelines.

PLoS One. 2015;10(5):e0125620.

PMID: 25965407

Papers on Methods for Analyzing Big Data

Supervised by Prof. Henrik Toft Sørensen and Prof. Lars Pedersen

Corraini P, Olsen M, Pedersen L, Dekkers OM^a, Vandenbroucke JP^{a,b}.

Effect modification, interaction and mediation: an overview of theoretical insights for clinical investigators.

Clin Epidemiol. 2017;9:331-8.

PMID: 28652815

Collaboration with: ^a Leiden University Medical Center, Leiden, The Netherlands; ^b Department of Epidemiology and Population Health, London School of Hygiene and Tropical Medicine, London, UK.

Ehrenstein V, Nielsen H, Pedersen AB, Johnsen SP, Pedersen L.

Clinical epidemiology in the era of big data: new opportunities, familiar challenges.

Clin Epidemiol. 2017;9:245-50.

PMID: 28490904

Kahlert J, Gribsholt SB^a, Gammelager H^b, Dekkers OM^c, Luta G^d.

Control of confounding in the analysis phase - an overview for clinicians.

Clin Epidemiol. 2017;9:195-204.

PMID: 28408854

Collaboration with: ^a Department of Endocrinology and Internal Medicine, Aarhus University Hospital, Aarhus, Denmark; ^b Department of Anaesthesiology and Intensive Care Medicine, Aarhus University Hospital, Aarhus, Denmark; ^c Department of Medicine, Section Endocrinology, Leiden University Medical Center, Leiden, The Netherlands; ^d Department of Biostatistics, Bioinformatics, and Biomathematics, Georgetown University Medical Center, Washington, DC, USA.

Nørgaard M, Ehrenstein V, Vandenbroucke JP^{a,b}.

Confounding in observational studies based on large health care databases: problems and potential solutions - a primer for the clinician.

Clin Epidemiol. 2017;9:185-93.

PMID: 28405173

Collaboration with: ^a Department of Clinical Epidemiology, Leiden University Medical Center, The Netherlands; ^b Department of Epidemiology and Population Health, London School of Hygiene and Tropical Medicine, London, UK.

Pedersen AB, Mikkelsen EM, Cronin-Fenton D, Kristensen NR, Pham TM^a, Pedersen L, Petersen I^a.

Missing data and multiple imputation in clinical epidemiological research.

Clin Epidemiol. 2017;9:157-66

PMID: 28352203

Collaboration with: ^a Department of Primary Care and Population Health, University College London, London, UK.

PhD Theses

Supervised by Prof. Henrik Toft Sørensen during PROCRIN

Jensen-Haarup, CS.

Colorectal cancer surgery and acute kidney injury – A review with special reference to the risk and prognosis of renin-angiotensin system blocker use.

Aarhus University, 2018.

Kinlaw A.

Antibiotic prescribing in early childhood and incident childhood asthma: a registry-based nationwide cohort study in Denmark.

University of North Carolina at Chapel Hill, 2016.

Munch, T.

Use of opioids prior to hospital admission among the nonsurgical critically ill – Studies on risk and prognosis.

Aarhus University, 2018.

Schmidt SAJ.

Herpes zoster – Occurrence and risk factors.

Aarhus University, 2017.

Sundbøll J.

Depression, stroke, and dementia in patients with myocardial infarction – Studies of risk and prognosis.

Aarhus University, 2017.

Thygesen S.

Respiratory distress syndrome in moderately late and late preterm infants and selected long-term neurodevelopmental outcomes.

Aarhus University, 2016.

Thematic Series on the Danish Clinical Registries and Databases

In the spring of 2015, Subprogram 5 invited all clinical quality databases in the Danish Clinical Registries (Subprogram 2) to submit a review paper on their database. 55 clinical quality databases participated and their papers have been published in the peer-reviewed journal *Clinical Epidemiology*. The Thematic Series is the first joint collection of review papers on the clinical quality databases and serves as an excellent reference of the unique Danish clinical quality databases and registries.

The collection of papers are available on the journal website at:

<https://www.dovepress.com/clinical-epidemiology-archive43-collection3> (open access).

Chief editor: Henrik Toft Sørensen

Associate editor: Vera Ehrenstein

Assistant editor: Helle Vester

Editorial

Sørensen HT, Pedersen L, Jørgensen J, Ehrenstein V.

Danish clinical quality databases – an important and untapped resource for clinical research.

Clin Epidemiol. 2016;8:425-427

PMID: 27843338

55 Review Papers

Andersen N, Hjortdal JØ, Schielke Kc, Bek T, Grauslund J, Laugesen CS, Lund-Andersen H, Cerqueira C, Andresen J.

The Danish Registry of Diabetic Retinopathy.

Clin Epidemiol. 2016;8:613-619

PMID: 27822108

Andersson CB, Flems C, Kesmodel US.

The Danish National Quality Database for Births.

Clin Epidemiol. 2016;8:595-599

PMID: 27822105

Antonsen K, Rosenstock CV, Lundstrøm LH.

The Danish Anaesthesia Database.

Clin Epidemiol. 2016;8:435-438

PMID: 27843340

Arboe B, Josefsson P, Jørgensen J, Haaber J, Jensen P, Poulsen C, Rønnov-Jessen D, Pedersen RS, Pedersen P, Frederiksen M, Pedersen M, de Nully Brown P.

Danish National Lymphoma Registry.

Clin Epidemiol. 2016;8:577-581

PMID: 27822102

Backer V, Lykkegaard J, Bodtger U, Agertoft L, Korshøj L, Braüner EV.

The Danish National Register for Asthma.

Clin Epidemiol. 2016;8:601-606

PMID: 27822106

Bak M, Ibfelt EH, Stauffer Larsen T, Rønnov-Jessen D, Pallisgaard N, Madelung A, Udby L, Hasselbalch HC, Bjerrum OW, Andersen CL.

The Danish National Chronic Myeloid Neoplasia Registry.

Clin Epidemiol. 2016;8:567-572

PMID: 27822101

Baandrup L, Cerqueira C, Haller L, Korshøj L, Voldsgaard I, Nordentoft M.

The Danish Schizophrenia Registry.

Clin Epidemiol. 2016;8:691-695

PMID: 27843348

Christiansen CF, Møller MH, Nielsen H, Christensen S.

The Danish Intensive Care Database.

Clin Epidemiol. 2016;8:525-530

PMID: 27822095

Christiansen P, Ejlersen B, Jensen MB, Mouridsen H.

Danish Breast Cancer Cooperative Group.

Clin Epidemiol. 2016;8:445-449

PMID: 27822082

da Cunha-Bang C, Geisler CH, Enggaard L, Poulsen CB, de Nully Brown P, Frederiksen H, Bergmann OJ, Pulczynski EJ, Pedersen RS, Nielsen LH, Christiansen I, Niemann CU.

The Danish National Chronic Lymphocytic Leukemia Registry.

Clin Epidemiol. 2016;8:561-565

PMID: 27822100

Daugaard G, Kier MGG, Bandak M, Mortensen MS, Larsson H, Søgaard M, Toft BG, Engvad B, Agerbæk M, Holm NV, Lauritsen J.

The Danish Testicular Cancer Database.

Clin Epidemiol. 2016;8:703-707

PMID: 27822117

Ekelund CK, Kopp TI, Tabor A, Petersen OB.

The Danish Fetal Medicine Database.

Clin Epidemiol. 2016;8:479-483

PMID: 27822088

Eldrup N, Cerqueira C, de la Motte L, Rathenborg LK, Hansen AK.

The Danish Vascular Registry, Karbase.

Clin Epidemiol. 2016;8:713-718

PMID: 27822118

Friis-Andersen H, Bisgaard T.

The Danish Inguinal Hernia Database.

Clin Epidemiol. 2016;8:521-524

PMID: 27822094

Frischknecht Christensen E, Berlac PA, Nielsen H, Christiansen CF.

The Danish Quality Database for Prehospital Emergency Medical Services.

Clin Epidemiol. 2016;8:667-671

PMID: 27843347

Fristrup C, Detlefsen S, Hansen CP, Ladekarl M.

Danish Pancreatic Cancer Database.

Clin Epidemiol. 2016;8:645-648

PMID: 27822112

Gimsing P, Holmström MO, Klausen TW, Andersen NF, Gregersen H, Pedersen RS, Plesner T, Pedersen PT, Frederiksen M, Frølund U, Helleberg C, Vangsted A, de Nully Brown P, Abildgaard N.

The Danish National Multiple Myeloma Registry.

Clin Epidemiol. 2016;8:583-587

PMID: 27822103

Groenvold M, Adersen M, Hansen MB.

Danish Palliative Care Database.

Clin Epidemiol. 2016;8:637-643

PMID: 27822111

Gundtoft PH, Varnum C, Pedersen AB, Overgaard S.

The Danish Hip Arthroplasty Register.

Clin Epidemiol. 2016;8:509-514

PMID: 27822092

Hansen E, Larsson H, Nørgaard M, Thind P, Jensen JB.

The Danish Bladder Cancer Database.

Clin Epidemiol. 2016;8:439-443

PMID: 27822081

Hansen S.

The Danish Neuro-Oncology Registry.

Clin Epidemiol. 2016;8:629-632

PMID: 27822109

Hansen UD, Gradel KO, Larsen MD.

Danish Urogynaecological Database.

Clin Epidemiol. 2016;8:709-712

PMID: 27826217

Heaf J.

The Danish Nephrology Registry.

Clin Epidemiol. 2016;8:621-627

PMID: 27843345

Helgstrand F, Jorgensen LN.

The Danish Ventral Hernia Database – a valuable tool for quality assessment and research.

Clin Epidemiol. 2016;8:719-723

PMID: 27822119

Hölmich LR, Klausen S, Spaun E, Schmidt G, Gad D, Svane IM, Schmidt H, Lorentzen HF, Ibfelt EH.

The Danish Melanoma Database.

Clin Epidemiol. 2016;8:543-548

PMID: 27822097

Ibfelt EH, Jensen DV, Hetland ML.

The Danish Nationwide Clinical Register for Patients with Rheumatoid Arthritis: DANBIO.

Clin Epidemiol. 2016;8:737-742

PMID: 27822121

Ingeholm P, Gögenur I, Iversen LH.

Danish Colorectal Cancer Group Database.

Clin Epidemiol. 2016;8:465-468

PMID: 27822086

Jennum PJ, Larsen P, Cerqueira C, Schmidt T, Tønnesen P.

The Danish National Database for Obstructive Sleep Apnea.

Clin Epidemiol. 2016;8:573-576

PMID: 27843344

Jakobsen E, Rasmussen TR.

The Danish Lung Cancer Registry.

Clin Epidemiol. 2016;8:537-541

PMID: 27822096

Jakobsen JK, Öztürk B, Søgaard M.

The Danish National Penile Cancer Quality database.

Clin Epidemiol. 2016;8:589-594

PMID: 27822104

Johnsen SP, Ingeman A, Hunborg HH, Schaarup SZ, Gyllenberg J.

The Danish Stroke Registry.

Clin Epidemiol. 2016;8:697-702

PMID: 27843349

Jorgensen PH, Lausten GS, Pedersen AB.

The Danish Sarcoma Database.

Clin Epidemiol. 2016;8:685-690

PMID: 27822116

Jørgensen ME, Kristensen JK, Reventlov Husted G, Cerqueira CS, Rossing P.

The Danish Adult Diabetes Registry.

Clin Epidemiol. 2016;8:429-434

PMID: 27843339

Kannegaard PN, Vinding KL, Hare-Bruun H.

National Database of Geriatrics.

Clin Epidemiol. 2016;8:731-735

PMID: 27822120

Lamberg AL, Sølvsten H, Lei U, Vinding GR, Stender IM, Jemec GB, Vestergaard T, Thormann H, Hædersdal M, Dam TN, Olesen AB.

The Danish Nonmelanoma Skin Cancer Dermatology Database.

Clin Epidemiol. 2016;8:633-636

PMID: 27822110

Lange P, Tøttenborg SS, Sorknæs AD, Andersen JS, Søgaard M, Nielsen H, Thomsen RW, Nielsen KA.

Danish Register of Chronic Obstructive Pulmonary Disease.

Clin Epidemiol. 2016;8:673-678

PMID: 27822114

Larsen L, Jensen MD, Larsen MD, Nielsen RG, Thorsgaard N, Vind I, Wildt S, Kjeldsen J.

The Danish National Registry for Biological Therapy in Inflammatory Bowel Disease.

Clin Epidemiol. 2016;8:607-612

PMID: 27822107

Lassen AT, Jørgensen H, Jørsboe HB, Odby A, Brabrand M, Steinmetz J, Mackenhauer J, Kirkegaard H, Christiansen CF.

The Danish Database for Acute and Emergency Hospital Contacts.

Clin Epidemiol. 2016;8:469-474

PMID: 27822087

Magyari M, Koch-Henriksen N, Sørensen PS.

The Danish Multiple Sclerosis Treatment Register.

Clin Epidemiol. 2016;8:549-552

PMID: 27822098

Mikkelsen EM, Njor SH, Vejborg I.

Danish Quality Database for Mammography Screening.

Clin Epidemiol. 2016;8:661-666

PMID: 27822113

Nguyen-Nielsen M, Høyer S, Friis S, Hansen S, Brasso K, Jakobsen EB, Moe M, Larsson H, Søgaard M, Nakano A, Borre M.

The Danish Prostate Cancer Database.

Clin Epidemiol. 2016;8:649-653

PMID: 27843346

Overgaard J, Jovanovic A, Godballe C, Grau Eriksen J.

The Danish Head and Neck Cancer Database.

Clin Epidemiol. 2016;8:491-496

PMID: 27843342

Petersen AC, Søgaard M, Mehnert F, Larsen EH, Donskov F, Azawi NH, Kromann-Andersen B.

The Database of the Danish Renal Cancer Group.

Clin Epidemiol. 2016;8:725-729

PMID: 27843350

Rahr-Wagner L, Lind M.

The Danish Knee Ligament Reconstruction Registry.

Clin Epidemiol. 2016;8:531-535

PMID: 27843343

Rasmussen HM, Nordbye-Nielsen K, Møller-Madsen B, Johansen M, Ellitsgaard N, Pedersen CR, Rackauskaite G, Engberg H, Pedersen NW.

The Danish Cerebral Palsy Follow-up Program.

Clin Epidemiol. 2016;8:457-460

PMID: 27822084

Rygaard C.

The Danish Quality Database for Cervical Cancer Screening.

Clin Epidemiol. 2016;8:655-660

PMID: 27826216

Schjødt I, Nakano A, Egstrup K, Cerqueira C.

The Danish Heart Failure Registry.

Clin Epidemiol. 2016;8:497-502

PMID: 27822090

Schrøder H, Rechnitzer C, Wehner PS, Rosthøj S, Møller JK, Lausen B, Petersen G, Nørgaard M.

Danish Childhood Cancer Registry.

Clin Epidemiol. 2016;8:461-464

PMID: 27822085

Svensson J, Cerqueira C, Kjærsgaard P, Lyngsøe L, Hertel NT, Madsen M, Mortensen HB, Johannesen J.

Danish Registry of Childhood and Adolescent Diabetes.

Clin Epidemiol. 2016;8:679-683

PMID: 27822115

Sørensen SM, Bjørn SF, Jochumsen KM, Jensen PT, Thranov IR, Hare-Bruun H, Seibæk L, Høgdall C.

Danish Gynecological Cancer Database.

Clin Epidemiol. 2016;8:485-490

PMID: 27822089

Topsoe MF, Ibfelt EH, Settnes A.

The Danish Hysterectomy and Hysteroscopy Database.

Clin Epidemiol. 2016;8:515-520

PMID: 27822093

Videbech P, Deleuran A.

The Danish Depression Database.

Clin Epidemiol. 2016;8:475-478

PMID: 27843341

Zwisler AD, Rossau HK, Nakano A, Foghmar S, Eichhorst R, Prescott E, Cerqueira C, Soja AMB, Gislason GH, Larsen ML, Andersen UO, Gustafsson I, Thomsen KK, Boye Hansen L, Hammer S, Viggers L, Christensen B, Kvist B, Lindström Egholm C, May O.

The Danish Cardiac Rehabilitation Database.

Clin Epidemiol. 2016;8:451-456

PMID: 27822083

Østgård LSG, Nørgaard JM, Raaschou-Jensen KK, Pedersen RS, Rønnov-Jessen D, Pedersen PT, Dufva IH, Marcher CW, Nielsen OJ, Severinsen MT, Friis LS.

The Danish National Acute Leukemia Registry.

Clin Epidemiol. 2016;8:553-560

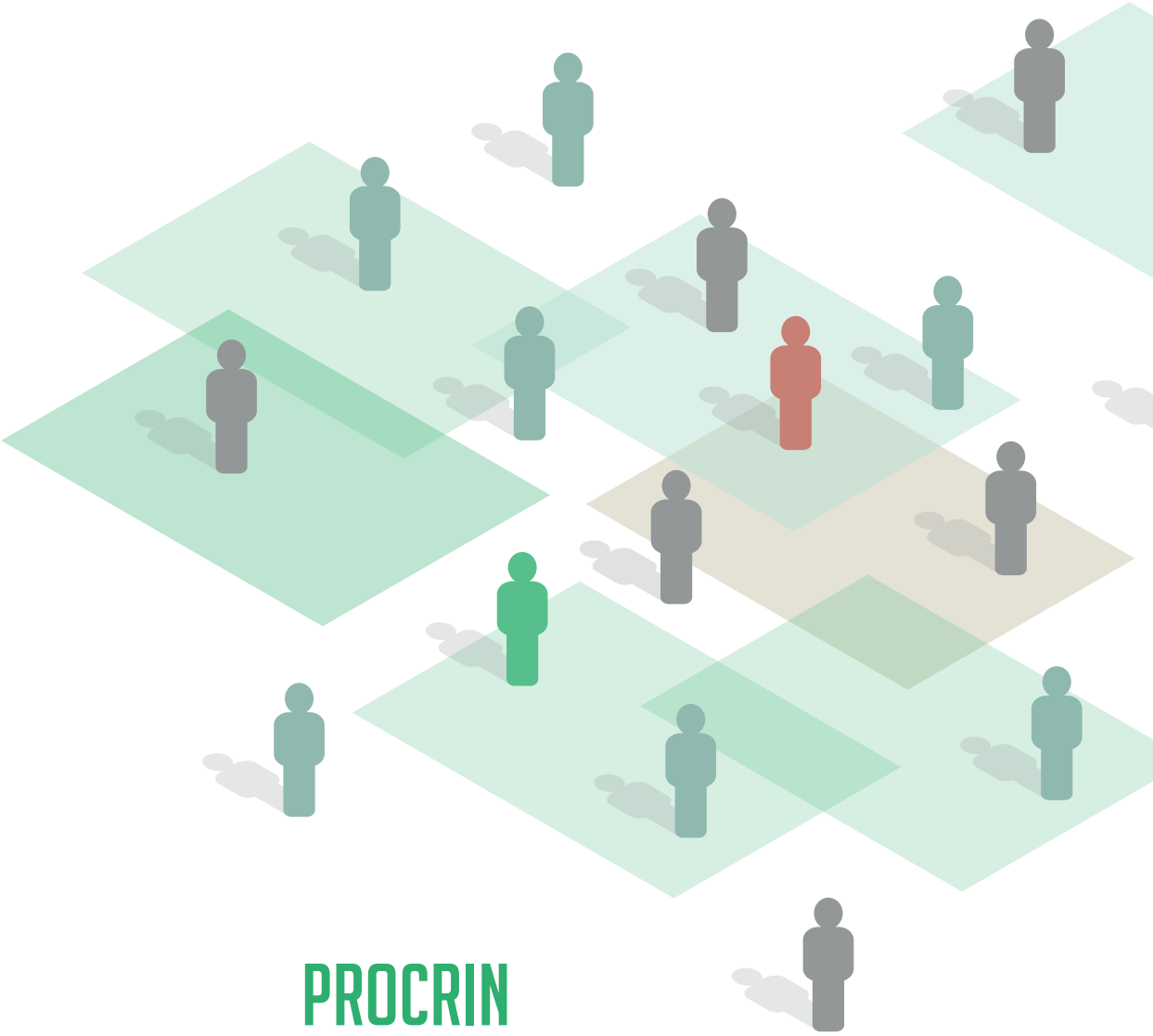
PMID: 27822099

Özcan C, Juel K, Flensted Lassen J, von Kappelgaard LM, Mortensen PE, Gislason G.

The Danish Heart Registry.

Clin Epidemiol. 2016;8:503-508

PMID: 27822091



PROCRIN